

APP CRS  
120°

Rwy Ldg	<b>7000</b>
TDZE	<b>1225</b>
Apt Elev	<b>1249</b>

## RNAV (RNP) RWY 12

PANGBORN MEML (EAT)



For uncompensated Baro-VNAV systems, procedure NA below -10°C (14°F) or above 54°C (130°F). RF required. GPS required. FD or HUD required.

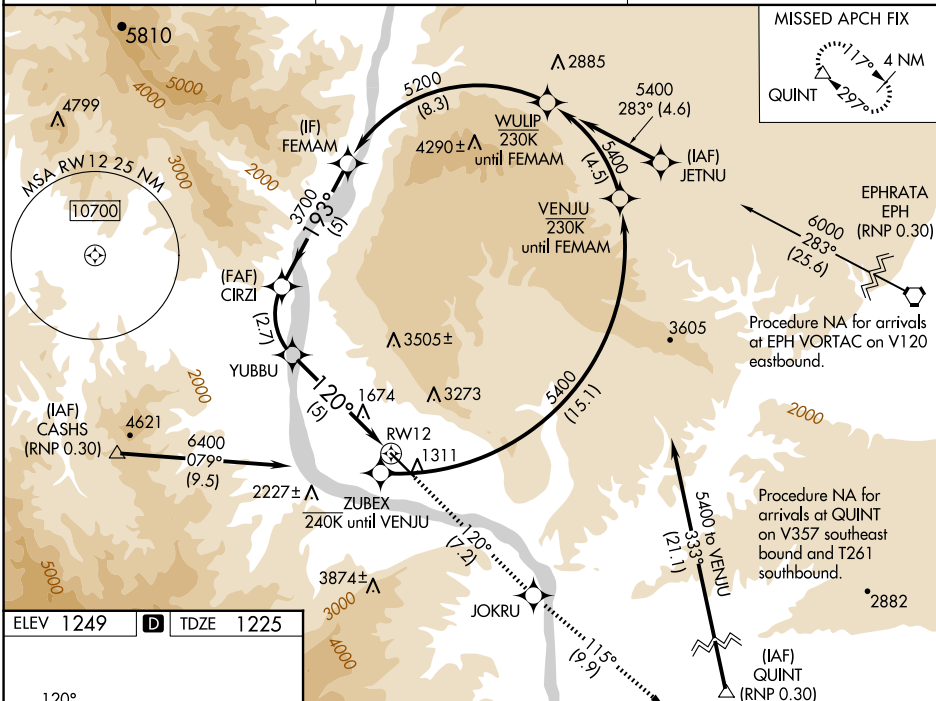


**MISSED APPROACH:** Climb to 5400 on track 120° to JOKRU and on track 115° to QUINT and hold.

\*Missed approach requires a minimum climb of 319 feet per NM to 3700.  
#Missed approach requires a minimum climb of 295 feet per NM to 3700.

ASOS  
119.925

SEATTLE CENTER  
126.1

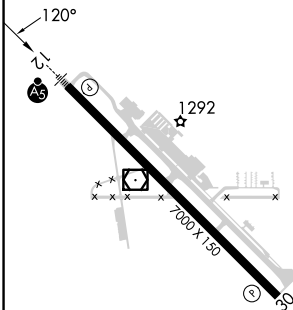
UNICOM  
123.0 (CTAF) **L**

ELEV 1249

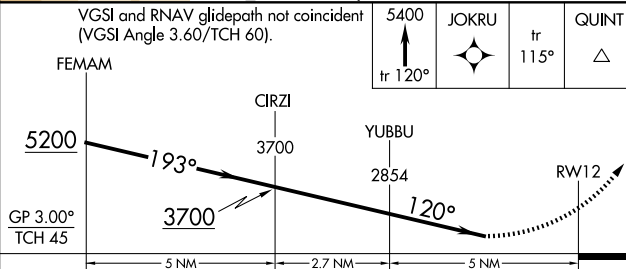
**D**

TD

E

REIL Rwy 30 **L**HIRL Rwy 12-30 **L**

VGSI and RNAV glidepath not coincident (VGSI Angle 3.60/TCH 60).



CATEGORY	A	B	C	D
RNP 0.15 DA*		1995-3	770 (800-3)	
RNP 0.19 DA#		2072-3	847 (900-3)	
RNP 0.30 DA		2417-5	1192 (1200-5)	

**AUTHORIZATION REQUIRED**

RNAV (RNP) RWY 12