

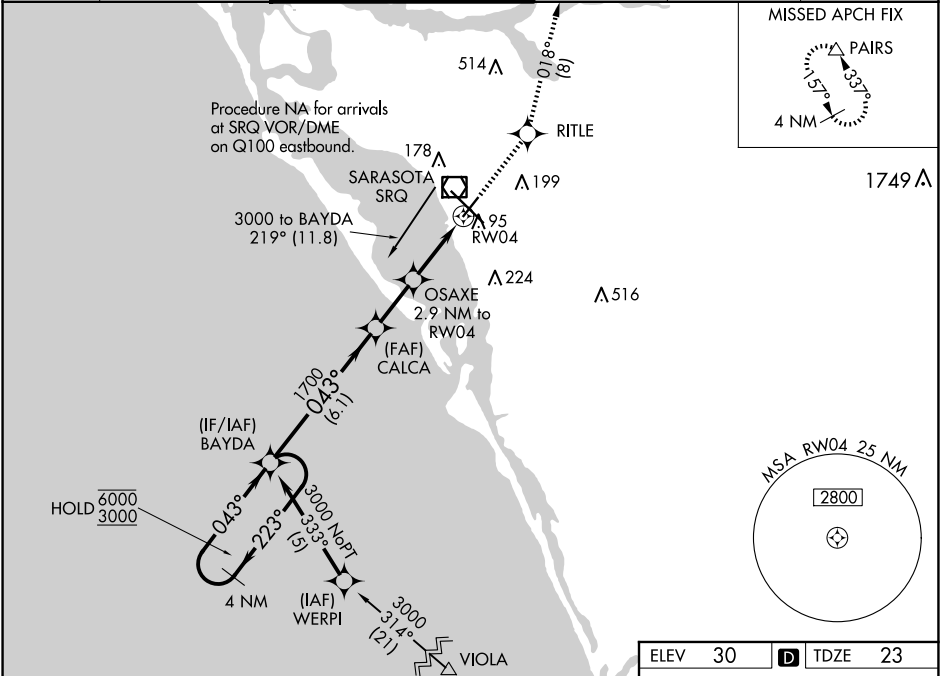
WAAS CH 99420 W04A	APP CRS 043°	Rwy Ldg 5006 TDZE 23 Apt Elev 30
--	------------------------	---

RNAV (GPS) RWY 4

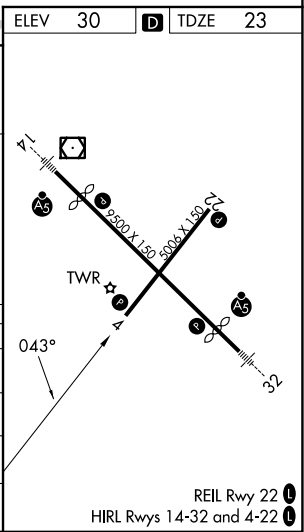
SARASOTA/BRADENTON INTL (SRQ)

RNP APCH.	MISSED APPROACH: Climb to 3000 direct RITLE and on track 018° to PAIRS and hold, continue climb-in-hold to 3000.
-----------	--

ATIS 124.375	TAMPA APP CON 119.65 353.575	SARASOTA TOWER ★ 120.1(CTAF) 0 256.8	GND CON 121.9 273.6	CLNC DEL 118.25	UNICOM 122.95
------------------------	--	--	-------------------------------	---------------------------	-------------------------



VGSI and RNAV glidepath not coincident (VGSI Angle 3.00/TCH 46).				
4 NM Holding Pattern				
GP 3.00° TCH 57				
BAYDA				
CALCA				
OSAXE 2.9 NM to RW04				
*1.1 NM to RW04				
RW04				
*1000				
6.1 NM 2.2 NM 1.8 NM 1.1 NM				
CATEGORY	A	B	C	D
LPV DA	317-1		294 (300-1)	
RNAV/VNAV DA	319-1		296 (300-1)	
RNAV MDA	420-1 397 (400-1)		420-1 397 (400-1 1/8)	
CIRCLING	500-1 470 (500-1)		600-1 570 (600-1 1/2)	
			600-2 570 (600-2)	



SE-3, 07 AUG 2025 to 04 SEP 2025

SE-3, 07 AUG 2025 to 04 SEP 2025