

WAAS CH <b>72605</b> <b>W32A</b>	APP CRS <b>319°</b>	Rwy Ldg <b>7510</b> TDZE <b>27</b> Apt Elev <b>30</b>
----------------------------------------	------------------------	-------------------------------------------------------------

RNAV (GPS) RWY 32  
SARASOTA/BRADENTON INTL (SRQ)

RNP APCH.

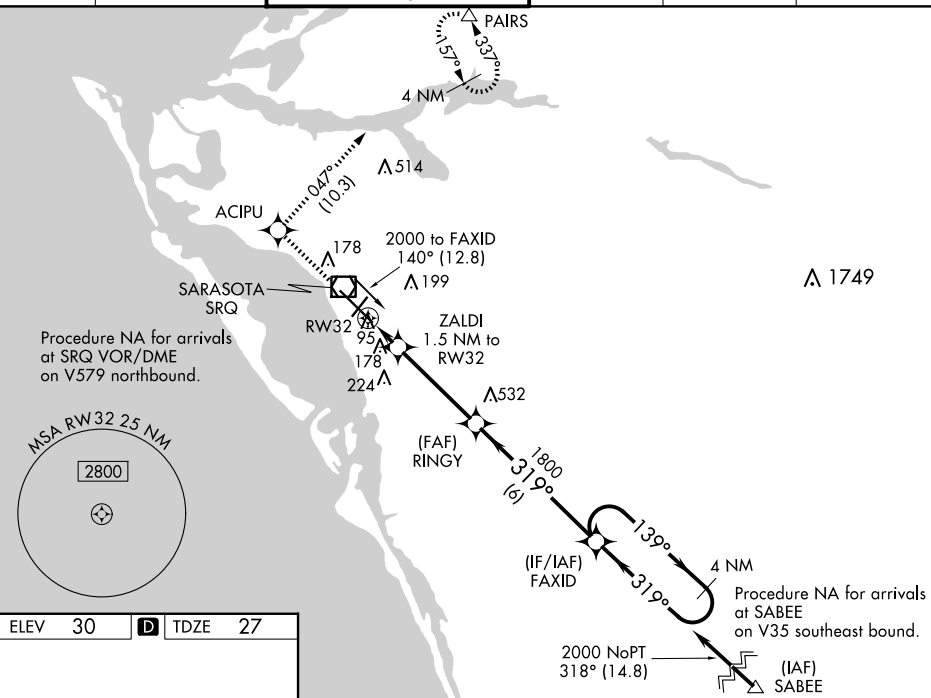
**T** For uncompensated Baro-VNAV systems, LNAV/VNAV NA below -15°C or above 43°C. When control tower closed, LPV and LNAV/VNAV NA; increase LNAV all Cats visibility to 1 mile. When control tower closed, inop table does not apply to LNAV Cats A and B. When control tower closed, for inop MALSR, increase LNAV Cat C and D visibility to 1½ mile.

MALS

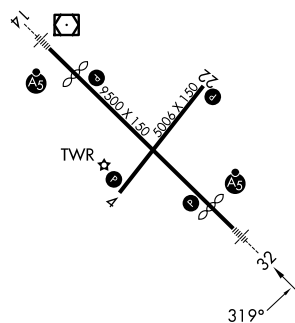


**MISSED APPROACH:** Climb to 3000 direct ACIPU and on track 047° to PAIRS and hold, continue climb-in-hold to 3000.

ATIS 124.375	TAMPA APP CON 119.65 353.575	SARASOTA TOWER ★ 120.1(CTAF) 0 256.8	GND CON 121.9 273.6	CLNC DEL 118.25	UNICOM 122.95
-----------------	---------------------------------	-----------------------------------------	------------------------	--------------------	------------------



ELEV	30	<b>D</b>	TDZE	27
------	----	----------	------	----

REIL Rwy 22 **L**HIRL Rwys 14-32 and 4-22 **L**

3000 ↑	ACIPU ✦	PAIRS tr 047° △	4 NM Holding Pattern FAXID 139° → 2000 ← 319° GP 3.00° TCH 53			
*LNAV only.		ZALDI 1.5 NM to RW32	RINGY 1800	319°	1800	540*
RW32		1.5 NM	3.9 NM	6 NM		
CATEGORY	A	B	C	D		
LPV DA	227-1/2		200 (200-1/2)			
LNAV/VNAV	463-1		436 (500-1)			
LNAV MDA	440-1/2 413 (500-1/2)		440-3/4		413 (500-3/4)	
CIRCLING	500-1 470 (500-1)		600-1 1/2 570 (600-1 1/2)		600-2 570 (600-2)	