
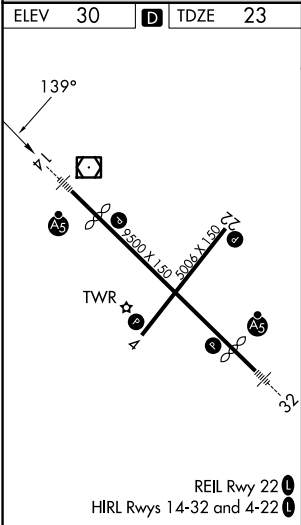
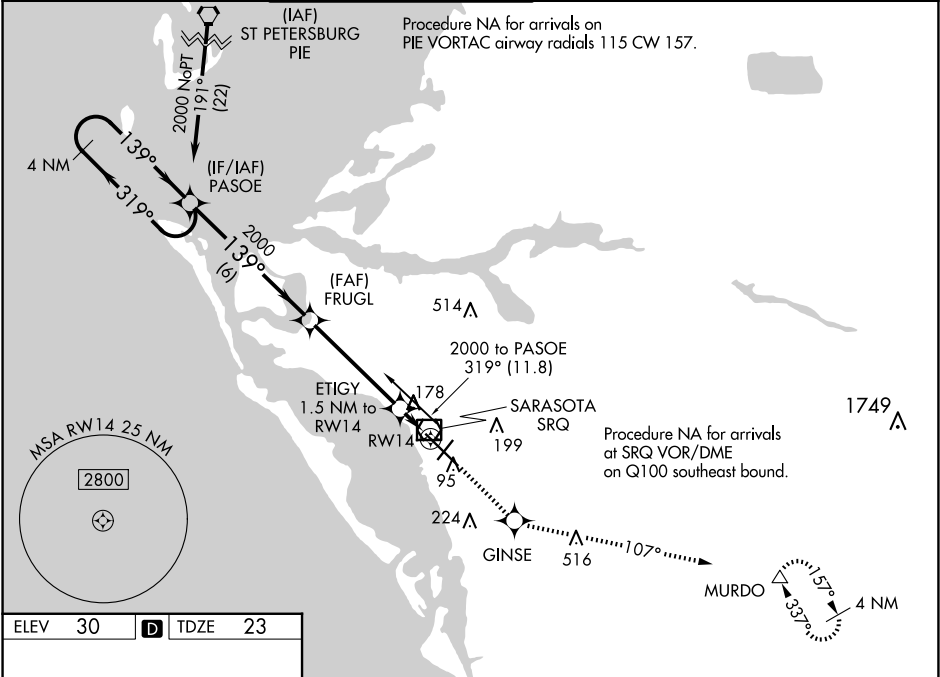


WAAS CH <b>86705</b> <b>W14A</b>	APP CRS <b>139°</b>	Rwy Ldg <b>7540</b> TDZE <b>23</b> Apt Elev <b>30</b>
--	------------------------	---

RNAV (GPS) RWY 14

SARASOTA/BRADENTON INTL (SRQ)

RNP APCH.					<div>MALSR</div> <div></div>	MISSED APPROACH: Climb to 3000 direct GINSE and on track 107° to MURDO and hold.	
<div>▼ For uncompensated Baro-VNAV systems, LNAV/VNAV NA below -15°C or above 43°C. When control tower closed, LPV and LNAV/VNAV NA; increase LNAV all Cats visibility to 1 mile. When control tower closed, inop table does not apply to LNAV Cats A and B. When control tower closed, for inop MALSR, increase LNAV Cats C and D visibility to 1½ mile.</div>							
ATIS 124.375	TAMPA APP CON 119.65 353.575	SARASOTA TOWER ★ 120.1(CTAF) 0 256.8	GND CON 121.9 273.6	CLNC DEL 118.25	UNICOM 122.95		



<div>4 NM Holding Pattern</div> <div>PASOE</div> <div>FRUGL</div> <div>2000</div> <div>2000</div> <div>ETIGY 1.5 NM to RW14</div> <div>*LNAV only.</div> <div>RW14</div>				<div>3000</div> <div>↑</div>	<div>GINSE</div> <div>✦</div>	<div>tr 107°</div>	<div>MURDO</div> <div>△</div>		
<div>2000 ← 319°</div> <div>139° →</div> <div>139°</div> <div>2000</div> <div>*560</div> <div>6 NM</div> <div>4.5 NM</div> <div>1.5 NM</div>									
<div>GP 3.00°</div> <div>TCH 54</div>									
CATEGORY		A		B		C		D	
LPV DA		223-½ 200 (200-½)							
LNAV/ VNAV DA		489-1⅛ 466 (500-1⅛)							
LNAV MDA		440-½ 417 (500-½)				440-¾ 417 (500-¾)			
CIRCLING		500-1 470 (500-1)				600-1½ 570 (600-1½)		600-2 570 (600-2)	