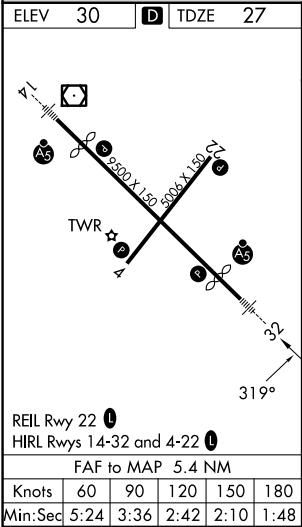
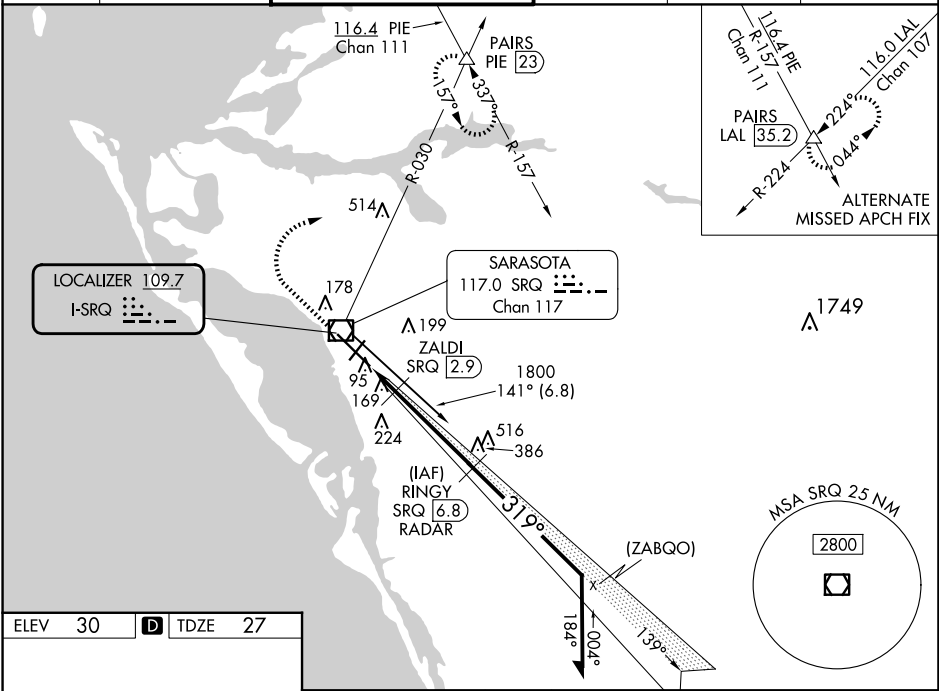


LOC I-SRQ <b>109.7</b>	APP CRS <b>319°</b>	Rwy Ldg TDZE Apt Elev <b>7510</b> <b>27</b> <b>30</b>
---------------------------	------------------------	--

ILS or LOC RWY 32  
SARASOTA/BRADENTON INTL (SRQ)

DME or RADAR required.		MALSR A5	MISSED APPROACH: Climb to 1000 then climbing right turn to 3000 on heading 065° and SRQ VOR/DME R-030 to PAIRS INT/PIE VORTAC 23 DME and hold, continue climb-in-hold to 3000.		
ATIS <b>124.375</b>	TAMPA APP CON <b>119.65 353.575</b>	SARASOTA TOWER ★ <b>120.1(CTAF) 0 256.8</b>	GND CON <b>121.9 273.6</b>	CLNC DEL <b>118.25</b>	UNICOM <b>122.95</b>



1000	3000	SRQ R-030	PAIRS	RINGY SRQ 6.8 RADAR	Remain within 10 NM
*LOC only.					
CATEGORY	A	B	C	D	
S-ILS 32	227-1/2 200 (200-1/2)				
S-LOC 32	480-1/2	453 (500-1/2)	480-7/8	453 (500-7/8)	
CIRCLING	500-1	470 (500-1)	600-1 1/2 570 (600-1 1/2)	600-2 570 (600-2)	
ZALDI FIX MINIMUMS					
S-LOC 32	360-1/2 333 (400-1/2)				
CIRCLING	500-1	470 (500-1)	600-1 1/2 570 (600-1 1/2)	600-2 570 (600-2)	