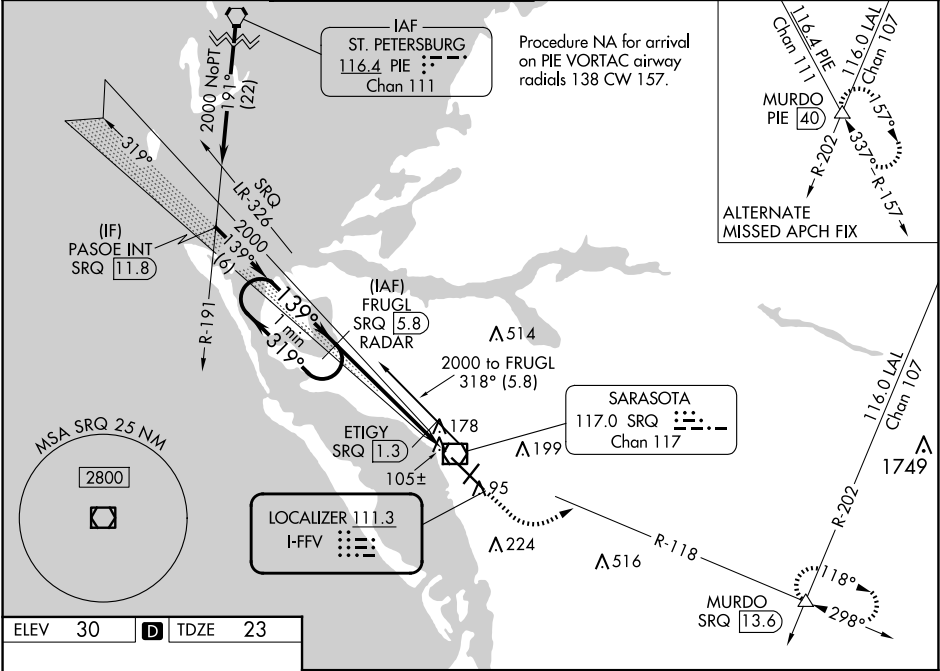


LOC I-FFV	APP CRS	Rwy Ldg
111.3	139°	7540
		TDZE
		23
		Apt Elev
		30

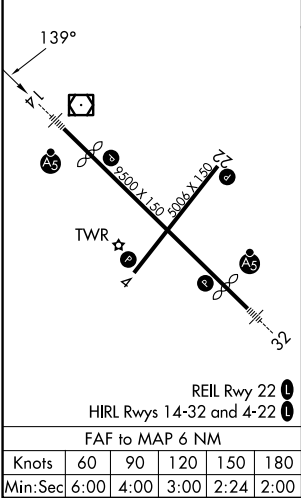
ILS or LOC RWY 14
SARASOTA/BRADENTON INTL (SRQ)

DME or RADAR required for LOC only.		MALSR	MISSED APPROACH: Climb to 1000 then climbing left turn to 2000 on SRQ VOR/DME R-118 to MURDO INT/SRQ 13.6 DME and hold.
When control tower closed, S-ILS 14 Minimums NA; increase S-LOC 14 Cats A and B and ETIGY Fix Minimums S-LOC 14 all Cats visibility to 1 mile. When control tower closed, inop table does not apply to S-LOC 14 Cats A and B and ETIGY Fix Minimums S-LOC 14 all Cats.		AS	

ATIS	TAMPA APP CON	SARASOTA TOWER ★	GND CON	CLNC DEL	UNICOM
124.375	119.65 353.575	120.1(CTAF) 0 256.8	121.9 273.6	118.25	122.95



ELEV	30	D	TDZE	23
------	----	---	------	----



One Minute Holding Pattern		FRUGL SRQ 5.8 RADAR		1000 ↑		2000 SRQ R-118		MURDO △		
								*LOC only.		
2000 ← 319°		2000		ETIGY SRQ 1.3						
GS 3.00° TCH 54		2000		139°		*500				
		4.5 NM		1.5 NM						
CATEGORY	A		B		C		D			
S-ILS 14	223-½ 200 (200-½)									
S-LOC 14	500-½		477 (500-½)		500-1		477 (500-1)			
CIRCLING	500-1		470 (500-1)		600-½ 570 (600-½)		600-2 570 (600-2)			
ETIGY FIX MINIMUMS										
S-LOC 14	360-½				337 (400-½)					
CIRCLING	500-1		470 (500-1)		600-½ 570 (600-½)		600-2 570 (600-2)			

SE-3, 07 AUG 2025 to 04 SEP 2025

SE-3, 07 AUG 2025 to 04 SEP 2025