

WAAS CH 45534 W28A	APP CRS 281°	Rwy Idg TDZE Apt Elev	8005 40 40
--	------------------------	-----------------------------	---------------------------------------

RNAV (GPS) RWY 28

Wallops Flight Facility (WAL)

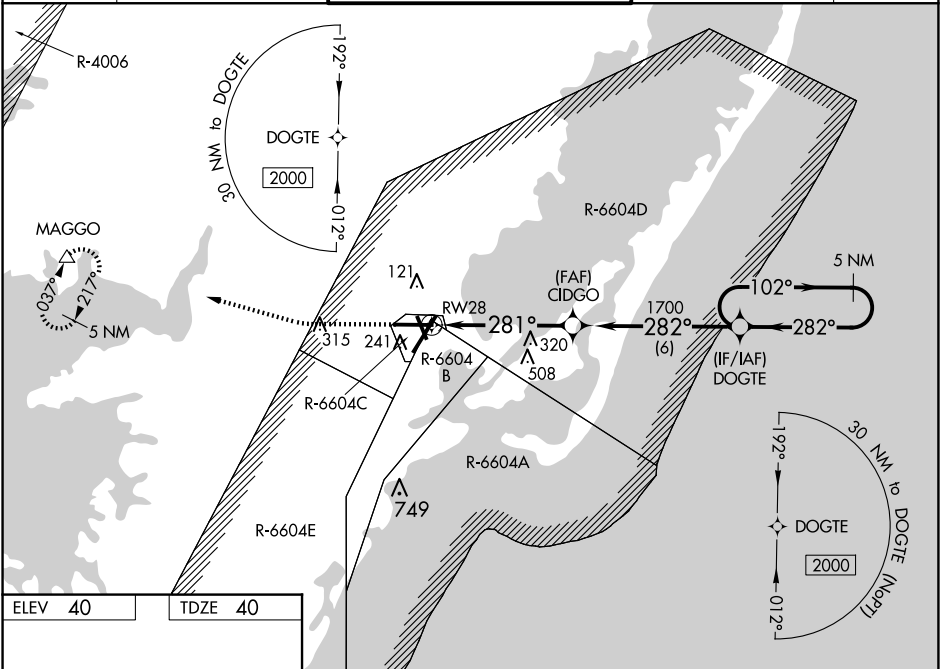
⚠

For uncompensated Baro-VNAV systems, LNAV/VNAV NA below -11°C (13°F) or above 54°C (130°F). DME/DME RNP-0.3 NA. When local altimeter setting not received, use Salisbury altimeter setting: increase LPV DA to 343 and all Cats visibility ¼ mile; increase LNAV/VNAV DA to 453 and all Cats visibility ¼ mile; increase all MDA 60 feet and LNAV Cats C/D and Girding Cat C visibility ¼ mile. Baro-VNAV and VDP NA when using Salisbury altimeter setting.

⚠

MISSED APPROACH: Climb to 600 then climbing right turn to 2000 direct MAGGO and hold.

ASOS 119.175	PATUXENT APP CON ★ 127.95 314.0	Wallops Tower ★ 126.5 (CTAF) 306.975 (CTAF)	GND CON 127.875 269.325	CLNC DEL 121.7
------------------------	---	---	-----------------------------------	--------------------------



ELEV 40

TDZE 40

600

2000

MAGGO

△

VGSI and RNAV glidepath not coincident (VGSI Angle 3.00°/TCH 61).

5 NM Holding Pattern

*LNAV only.

CIDGO

DOGTE

1700

281°

282°

102°

2000

GP 3.00°

TCH 50

1.3 NM

3.8 NM

6 NM

REIL all Rwy

HIRL Rwy 4-22, 10-28 and 17-35

CATEGORY	A	B	C	D
LPV DA	290-¾ 250 (300-¾)			
LNAV/VNAV DA	400-1½ 360 (400-1½)			
LNAV MDA	520-1	480 (500-1)	520-1¾	480 (500-1¾)
CIRCLING	600-1	560 (600-1)	620-1½	860-2¾
			580 (600-1½)	820 (900-2¾)