

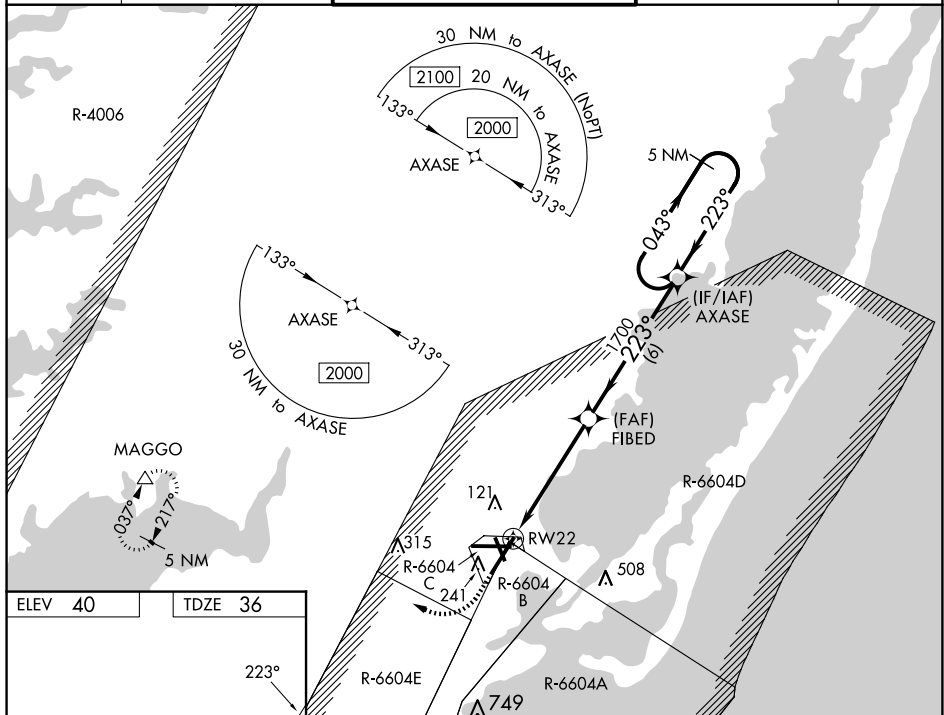
WAAS CH 86234 W22A	APP CRS 223°	Rwy Idg 8748 TDZE 36 Apt Elev 40
--	------------------------	---

RNAV (GPS) RWY 22

V For uncompensated Baro-VNAV systems, LNAV/VNAV NA below -11°C (13°F) or above 54°C (130°F). DME/DME-RNP 0.3 NA. Helicopter visibility reduction below ¾ SM NA. When local altimeter setting not received, use Solisbury altimeter setting: increase LPV DA to 367 and all Cats visibility ¼ mile; increase LNAV/VNAV DA to 489 and all Cats visibility ½ mile; increase all MDA 60 feet and LNAV Cats C/D visibility ½ mile and Circling Cat C visibility ¼ mile. Baro-VNAV and VDP NA when using Solisbury altimeter setting.

MISSED APPROACH:
Climb to 600 then
climbing right turn to
2000 direct MAGGO
and hold.

ASOS 119.175	PATUXENT APP CON ★ 127.95 314.0	WALLOPS TOWER ★ 126.5 (CTAF) 0 306.975 (CTAF) 0	GND CON 127.875 269.325	CLNC DEL 121.7
-----------------	------------------------------------	--	----------------------------	-------------------



CATEGORY	A	B	C	D
LPV DA		314- $\frac{7}{8}$	278 (300-%)	
LNNAV/VNAV DA		436- $\frac{13}{8}$	400 (400-1%)	
LNNAV MDA	500-1	464 (500-1)	500- $\frac{13}{8}$	464 (500-1%)
C CIRCLING	600-1	560 (600-1)	620- $1\frac{1}{2}$ 580 (600- $1\frac{1}{2}$)	860- $2\frac{3}{4}$ 820 (900- $2\frac{3}{4}$)

REIL all Rwy's
HIRL Rwy's 4-22, 10-28 and 17-35