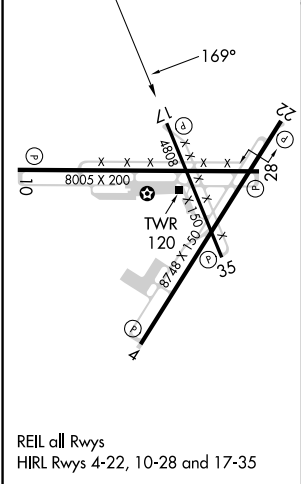
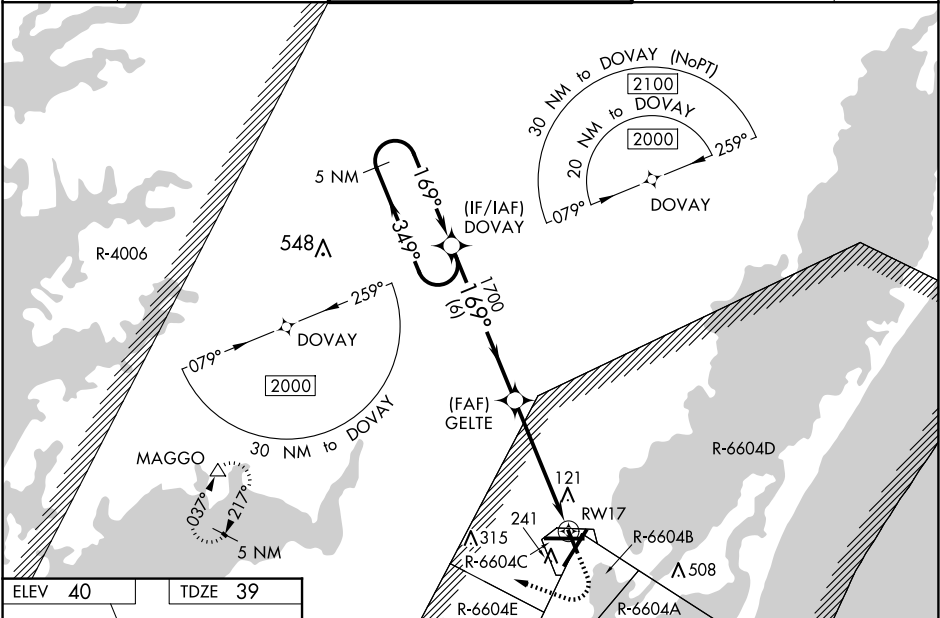


WAAS CH 69632 W17A	APP CRS 169°	Rwy Idg TDZE Apt Elev	4808 39 40
--	------------------------	-----------------------------	---------------------------------------

RNAV (GPS) RWY 17
Wallops Flight Facility (WAL)

<p>V For uncompensated Baro-VNAV systems, LNAV/VNAV NA below -11°C (13°F) or above 54°C (130°F). DME/DME RNP-0.3 NA. Helicopter visibility reduction below ¾ SM NA. When local altimeter setting not received, use Salisbury altimeter setting: increase LPV DA to 372 and all Cats visibility ⅓ mile, increase LNAV/VNAV DA to 437 and all Cats visibility ¼ mile, increase all MDA 60 feet and LNAV Cats C/D visibility ⅓ mile and Circling Cat C visibility ¼ mile. Baro-VNAV and VDP NA when using Salisbury altimeter setting.</p>	<p>MISSED APPROACH: Climb to 600 then climbing right turn to 2000 direct MAGGO and hold.</p>
--	--

ASOS 119.175	PATUXENT APP CON ★ 127.95 314.0	Wallops Tower ★ 126.5 (CTAF) 0 306.975 (CTAF) 0	GND CON 127.875 269.325	CLNC DEL 121.7
------------------------	---	---	-----------------------------------	--------------------------



VGSi and RNAV glidepath not coincident (VGSi Angle 3.00/TCH 63).		600	2000	MAGGO
5 NM Holding Pattern		DOVAY		
2000		← 349°	→ 169°	
GP 3.00° TCH 55			1700	
		6 NM	3.8 NM	1.3 NM
CATEGORY	A	B	C	D
LPV DA	322-1		283 (300-1)	
LNAV/VNAV DA	387-1½		348 (400-1½)	
LNAV MDA	500-1	461 (500-1)	500-1¾	461 (500-1¾)
CIRCLING	600-1	560 (600-1)	620-1½ 580 (600-1½)	860-2¾ 820 (900-2¾)