

VOR/DME ACO
114.4
Chan **91**

APP CRS
048°

Rwy Idg **8204**
TDZE **1199**
Apt Elev **1226**

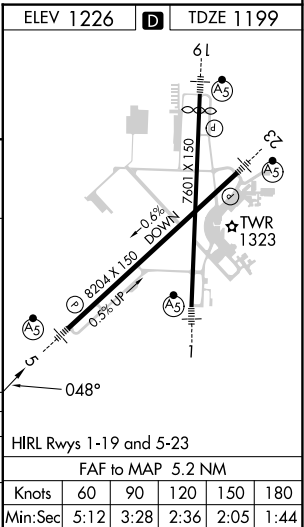
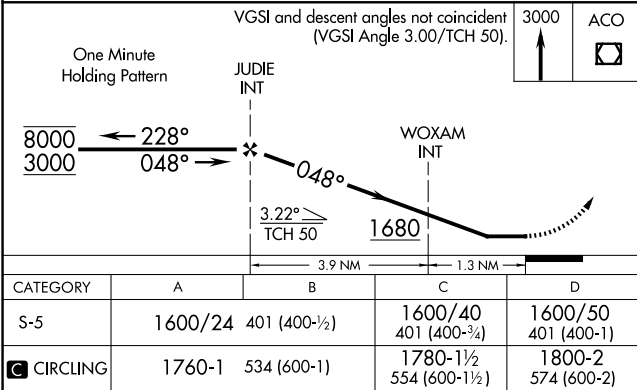
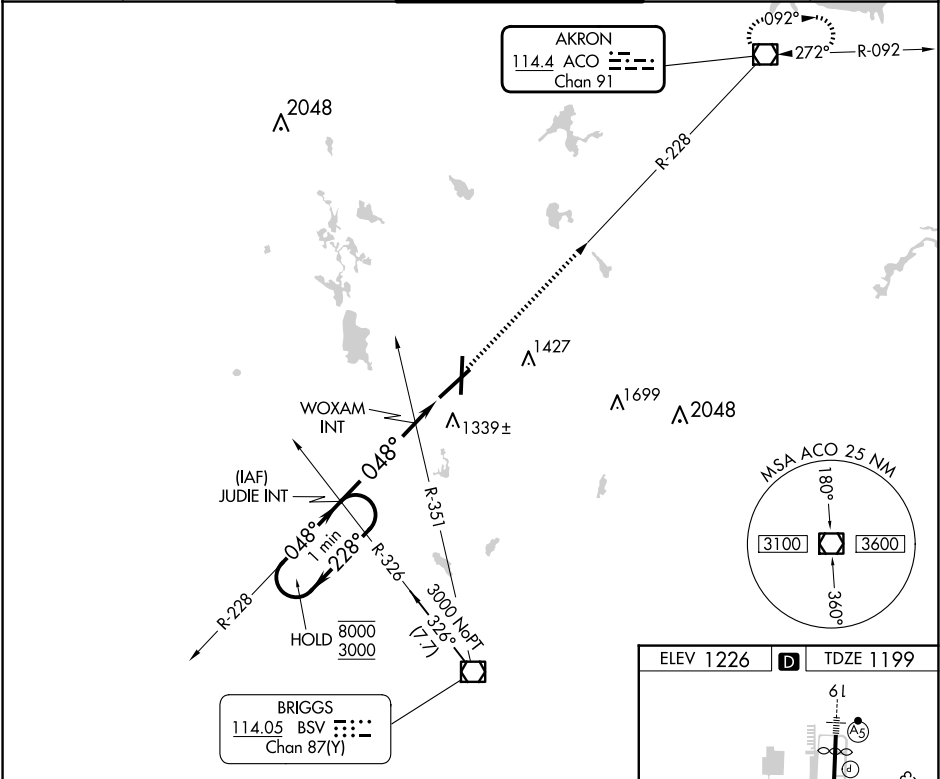
VOR RWY 5
AKRON-CANTON RGNL (CAK)

Dual VOR receivers required.

MALSR

MISSED APPROACH: Climb to 3000
direct ACO VOR/DME and hold.

ATIS 121.05	CLEVELAND APP CON ★ 125.5 269.25	AKRON-CANTON TOWER 134.75 279.575	GND CON 121.7 348.6	CLNC DEL 132.05
-----------------------	--	---	-------------------------------	---------------------------



EC-2, 07 AUG 2025 to 04 SEP 2025

EC-2, 07 AUG 2025 to 04 SEP 2025