

WAAS CH 70420 W01A	APP CRS 009°	Rwy Idg 7007 TDZE 1209 Apt Elev 1226
--	------------------------	---

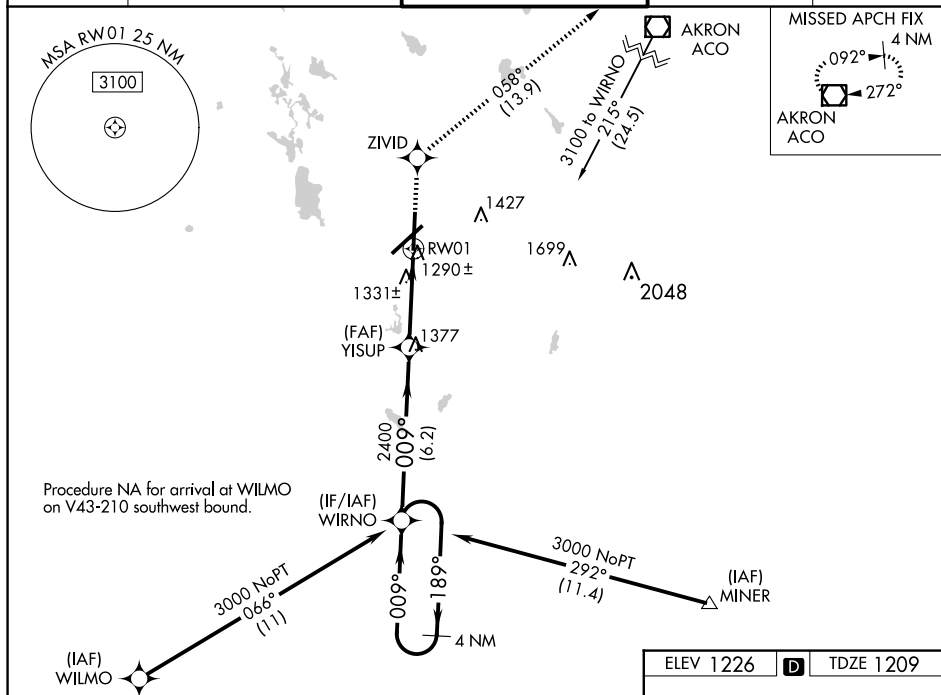
RNAV (GPS) RWY 1
AKRON-CANTON RGNL(CAK)

T For uncompensated Baro-VNAV systems, LNAV/VNAV NA below -17°C (2°F) or above 45°C (113°F). DME/DME RNP-0.3 NA.
 ** RVR 1800 authorized with use of FD or AP or HUD to DA.



MISSED APPROACH: Climb to 3000
direct ZIVID and on track 058° to
ACO VOR/DME and hold.

ATIS 121.05	CLEVELAND APP CON ★ 125.5 269.25	AKRON-CANTON TOWER 134.75 279.575	GND CON 121.7 348.6	CLNC DEL 132.05
-----------------------	--	---	-------------------------------	---------------------------



4 NM Holding Pattern

WIRNO

3000 ← 189°
009° →

GP 3.00°
TCH 53

YISUP 2400

009°

2400

*1.1 NM to RW01

RW01

*LNAV only

6.2 NM

2.4 NM

1.1

CATEGORY	A	B	C	D
LPV DA**	1409/24 200 (200-½)			
LNAV/VNAV DA	1542/40 333 (400-¾)			
LNAV MDA	1600/24 391 (400-½)			1600/50 391 (400-1)
CIRCLING	1760-1 534 (600-1)		1780-1½ 554 (600-1½)	1800-2 574 (600-2)

