

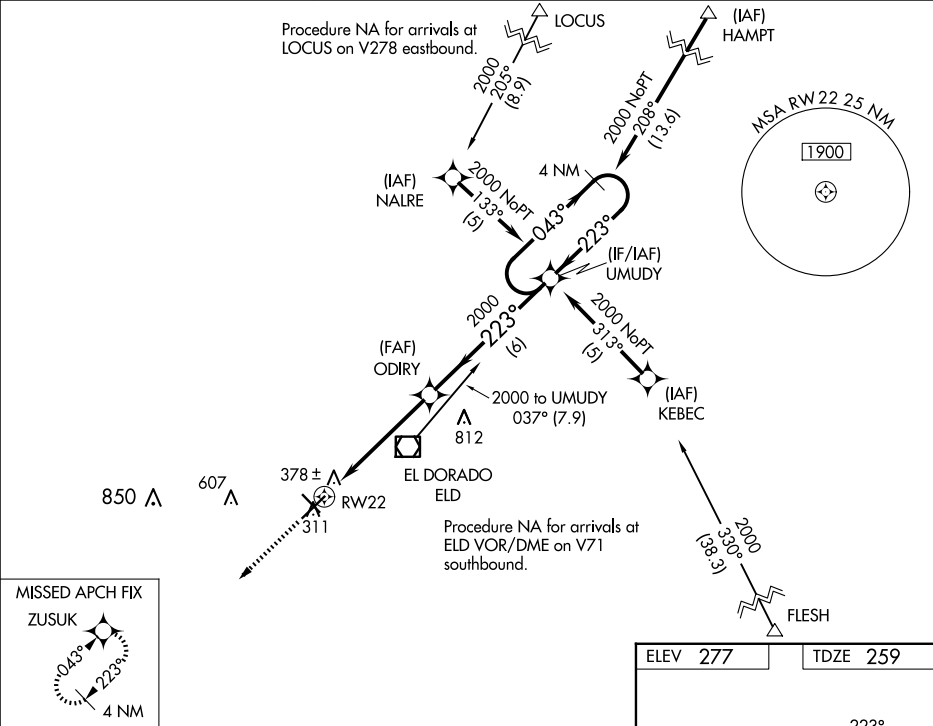
WAAS CH 77521 W22A	APP CRS 223°	Rwy Idg 6601 TDZE 259 Apt Elev 277
--	------------------------	---

RNAV (GPS) RWY 22

SOUTH ARKANSAS RGNL AT GOODWIN FLD (ELD)

RNP APCH. <div>For uncompensated Baro-VNAV systems, LNAV/VNAV NA below -15°C or above 54°C. For inop ALS, increase LPV all Cats visibility to 1½ SM, increase LNAV/VNAV all Cats visibility to 1¼ SM. Circling Rwy 4, 13, 31, NA at night.</div>	MALSR 	MISSED APPROACH: Climb to 2000 direct ZUSUK and hold.
---	-----------	--

ASOS 118.325	FORT WORTH CENTER 128.2 269.1	UNICOM 123.0 (CTAF) 0
------------------------	---	---------------------------------



2000

↑

ZUSUK

✧

VGSI and RNAV glidepath not coincident
(VGSI Angle 3.00/TCH 53).

* LNAV only.

ODIRY

2000

UMUDY

4 NM
Holding Pattern

* 1 NM to RW22

RW22

1 NM

4.2 NM

6 NM

223°

223°

223°

043°

2000

2000

GP 3.00°

TCH 50

CATEGORY	A	B	C	D
LPV DA		602-5⁄8	343 (400-5⁄8)	
LNAV/VNAV DA		650-7⁄8	391 (400-7⁄8)	
LNAV MDA	640-1⁄2	381 (400-1⁄2)	640-5⁄8	381 (400-5⁄8)
CIRCLING	740-1	463 (500-1)	920-13⁄4 643 (700-13⁄4)	920-2 643 (700-2)

