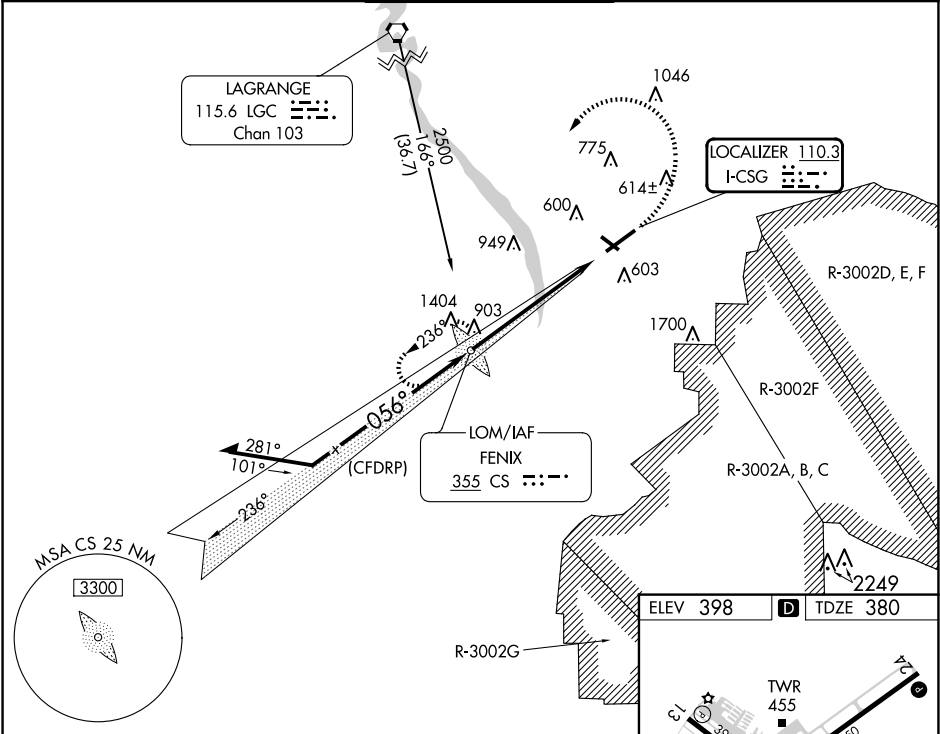


LOC I-CSG <b>110.3</b>	APP CRS <b>056°</b>	Rwy Idg TDZE Apt Elev <b>6997</b> <b>380</b> <b>398</b>
---------------------------	------------------------	--

ILS or LOC RWY 6

COLUMBUS (CSG)

ADF or RADAR required.		<div>MALSR</div>	MISSED APPROACH: Climb to 1000, then climbing left turn to 2700 direct FENIX LOM and hold, continue climb-in-hold to 2700.	
<div>▼</div> Circling to Rwy 13, 24 and 31 NA at night. Autopilot coupled approach Rwy 6 helicopter visibility reduction below ¾ SM NA. For inop ALS, increase S-ILS 06 all Cats visibility to RVR 4500. For inop ALS, increase S-LOC 06 Cats A and B visibility to RVR 5500 and Cats C and D visibility to 1¾ SM.	<div>▲</div>			
ATIS <b>127.75</b>	ATLANTA APP CON ★ <b>125.5 323.1</b>	COLUMBUS TOWER ★ <b>120.1</b> (CTAF) <b>257.8</b>	GND CON <b>121.9 348.6</b>	UNICOM <b>122.95</b>



Remain within 10 NM		FENIX CS LOM		1000	2700	FENIX
2500		236°	2101	↑		
2500		056°	2500	↶		
GS 2.61° TCH 49		6.1 NM				
CATEGORY	A	B	C	D		
S-ILS 6	664/40		284 (300-¾)			
S-LOC 6	1020/40	640 (700-¾)		1020-1⅜	640 (700-1⅜)	
CIRCLING	1020-1	622 (700-1)		1140-2¼ 742 (800-2¼)	1300-3 902 (1000-3)	

