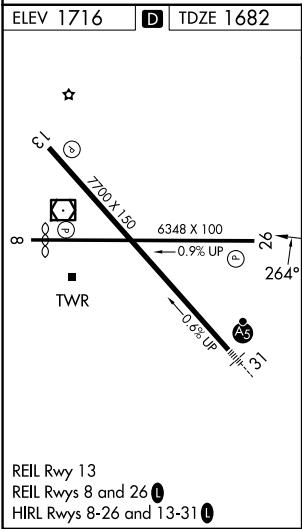
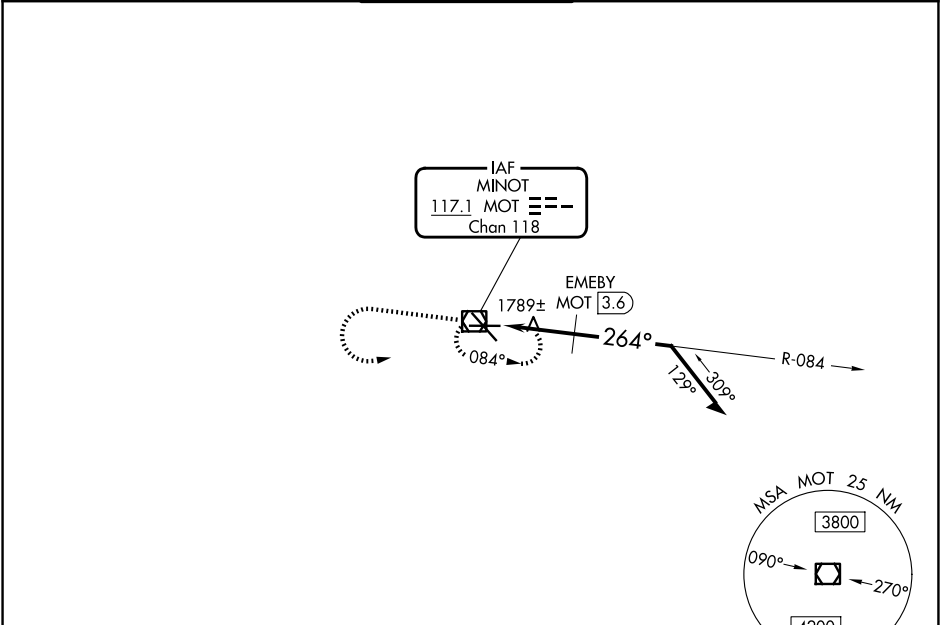



VOR/DME MOT	APP CRS	Rwy Ldg	6348
117.1	264°	TDZE	1682
Chan 118		Apt Elev	1716

VOR RWY 26
MINOT INTL (MOT)

ASOS 118.725		MINOT APP CON ★ 119.6 363.8	MAGIC CITY TOWER ★ 118.2(CTAF) 251.125	GND CON 121.9	UNICOM 122.95
-----------------	--	--------------------------------	---	------------------	------------------



3600 ↑		MOT 		MOT VOR/DME 3500		084°		Remain within 10 NM	
VGSI and descent angles not coincident (VGSI Angle 3.00/TCH 49).				MOT 2		EMBRY MOT 3.6		3400	
				2540		264°			
				TCH 50		2.91°			
				1 NM		1.6 NM			
CATEGORY	A		B		C		D		
S-26	2540-1 858 (900-1)		2540-1¼ 858 (900-1¼)		2540-2½ 858 (900-2½)		2540-2¾ 858 (900-2¾)		
CIRCLING	2540-1 824 (900-1)		2540-1¼ 824 (900-1¼)		2800-3		1084 (1100-3)		
EMBRY FIX MINIMUMS									
S-26	2040-1 358 (400-1)					2040-1¼ 358 (400-1¼)			
CIRCLING	2200-1 484 (500-1)		2240-1 524 (600-1)		2800-3		1084 (1100-3)		

NC-1, 07 AUG 2025 to 04 SEP 2025

NC-1, 07 AUG 2025 to 04 SEP 2025