

NC-1, 07 AUG 2025 to 04 SEP 2025

MINOT, NORTH DAKOTA

AL-635 (FAA)

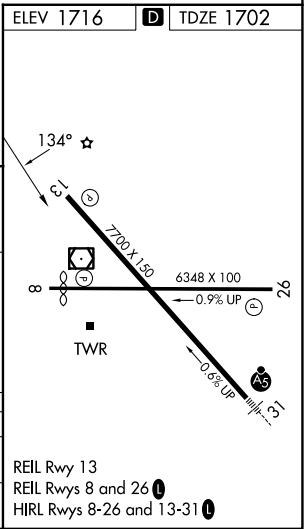
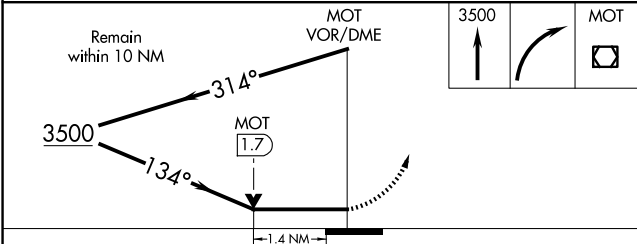
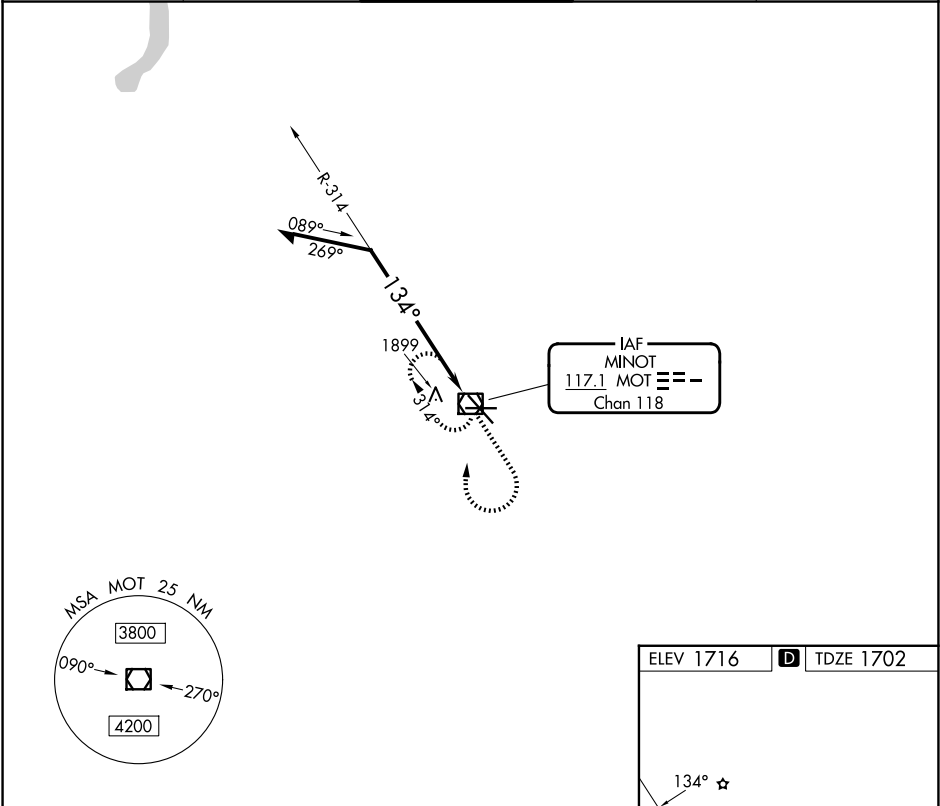
25219

VOR/DME MOT <b>117.1</b> Chan <b>118</b>	APP CRS <b>134°</b>	Rwy Ldg TDZE <b>1702</b> Apt Elev <b>1716</b>
--	------------------------	---

VOR RWY 13  
MINOT INTL (MOT)

 		MISSED APPROACH: Climb to 3500 then right turn direct MOT VOR/DME and hold.		
--	--	--	--	--

ASOS <b>118.725</b>	MINOT APP CON ★ <b>119.6 363.8</b>	MAGIC CITY TOWER ★ <b>118.2 (CTAF) 251.125</b>	GND CON <b>121.9</b>	UNICOM <b>122.95</b>
------------------------	---------------------------------------	---	-------------------------	-------------------------



CATEGORY	A	B	C	D
S-13	2200-1	498 (500-1)	2200-1 $\frac{3}{8}$ 498 (500-1 $\frac{3}{8}$ )	2200-1 $\frac{1}{2}$ 498 (500-1 $\frac{1}{2}$ )
CIRCLING	2200-1 484 (500-1)	2240-1 524 (600-1)	2800-3	1084 (1100-3)

MINOT, NORTH DAKOTA  
Amdt 11B 07OCT21

48°15'N-101°17'W

MINOT INTL (MOT)  
VOR RWY 13

NC-1, 07 AUG 2025 to 04 SEP 2025