

WAAS CH 56516 W26A	APP CRS 264°	Rwy Ldg TDZE 1682 Apt Elev 1716
--	------------------------	---

RNAV (GPS) RWY 26

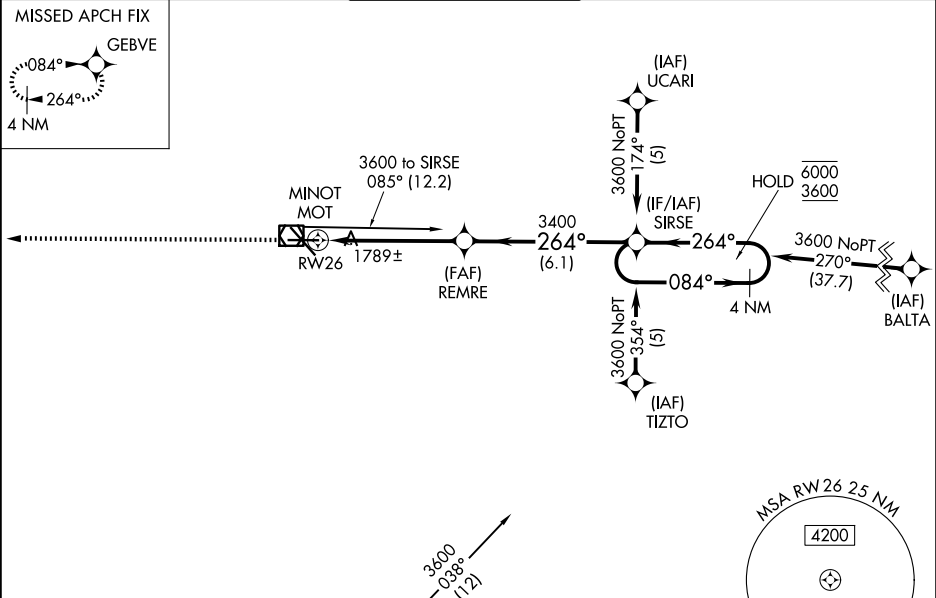
MINOT INTL (MOT)

RNP APCH.

For uncompensated Baro-VNAV systems, LNAV/VNAV NA below -18°C or above 54°C.

MISSED APPROACH: Climb to 3900 direct GEBVE and hold.

ASOS 118.725	MINOT APP CON ★ 119.6 363.8	MAGIC CITY TOWER ★ 118.2 (CTAF) 0 251.125	GND CON 121.9	UNICOM 122.95
------------------------	---------------------------------------	---	-------------------------	-------------------------



ELEV 1716 D TDZE 1682

REIL Rwy 13
REIL Rwy 8 and 26
HIRL Rwy 8-26 and 13-31

3900	GEBVE	REMR	SIRSE	4 NM Holding Pattern
<div>*LNAV only. *1 NM to RW26</div> <div></div>				
GP 3.00° TCH 50				
CATEGORY	A	B	C	D
LPV DA	1932-1 250 (300-1)			
LNAV/VNAV DA	1932-1 250 (300-1)			
LNAV MDA	2040-1 358 (400-1)		2040-1 358 (400-1 358)	
CIRCLING	2200-1 484 (500-1)	2240-1 524 (600-1)	2800-3 1084 (1100-3)	

NC-1, 07 AUG 2025 to 04 SEP 2025

NC-1, 07 AUG 2025 to 04 SEP 2025