

WAAS CH 97514 W11A	APP CRS 116°	Rwy Ldg 9339 TDZE 4840 Apt Elev 4861
--	------------------------	---

RNAV (GPS) Y RWY 11

GRAND JUNCTION RGNL (GJT)

RNP APCH - GPS.

T Circling NA for Cat D north of Rwy 11-29. For
A uncompensated Baro-VNAV systems, LNAV/VNAV NA
below -17°C or above 54°C. For inop ALS, increase LPV
all Cats visibility to RVR 4500 and increase LNAV Cat C/D
visibility to 1%. Inop table does not apply to LPV*.

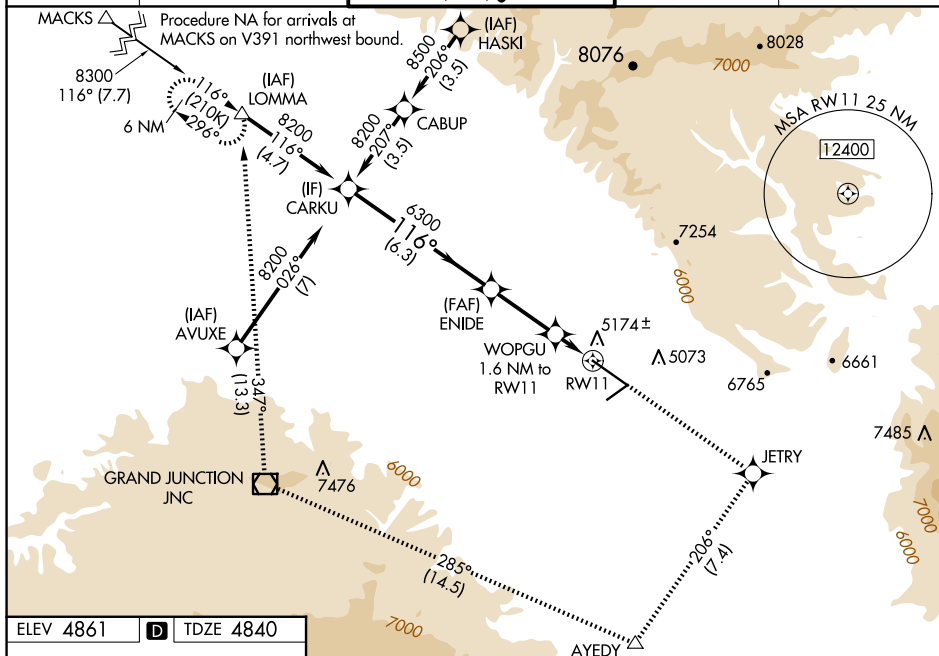
MALSF



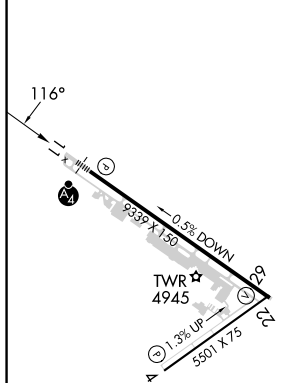
MISSED APPROACH: Climb to 6700 direct JETRY then climbing right turn to 9000 on track 206° to AYEDY and track 285° to JNC VOR/DME and track 347° to LOMMA and hold.

*Missed approach requires minimum climb of 206 feet per NM to 7740.

ATIS 118.55	DENVER APP CON ★ 119.7 317.4	GRAND JUNCTION TOWER ★ 118.1 (CTAF) 0 257.8	GND CON 121.7 257.8	UNICOM 122.95
------------------------------	---	--	--------------------------------------	--------------------------------



ELEV 4861	D	TDZE 4840
-----------	----------	-----------

HIRL Rwy 11-29 **L**

MIRL Rwy 4-22

REIL Rwy 4, 22 and 29

CARUKU		6700 ↑	JETRY ✦	9000 tr 206°	AYEDY △	tr 285°	JNC ◻	tr 347°	LOMMA △
8200		ENIDE 6300		WOPGU 1.6 NM to RW11		RW11			
GP 3.00° TCH 51		6300		5400					
		6.3 NM		2.8 NM		1.6 NM			
CATEGORY	A	B		C		D			
LPV DA*	5040/40		200 (200-¾)						
LPV DA	5120/40		280 (300-¾)						
INAV/ VNAV	DA	5317/60		477 (500-1¼)					
INAV MDA*	5280/40	440 (500-¾)		5280/50		440 (500-1)			
INAV MDA	5360/40	520 (500-¾)		5360-1¼		520 (500-1¼)			
CIRCLING	5380-1 519 (600-1)	5520-1 659 (700-1)		5840-3		979 (1000-3)			

RNAV (GPS) Y RWY 11