

LOC I-LOW

110.7

APP CRS

012°

Rwy Ldg

8400

TDZE

6649

Apt Elev

6649

ILS or LOC RWY 1

YELLOWSTONE (WYS)

ADF required. DME required for MUPDE stepdown fix.

▼

NA

-19°C

Obtain local altimeter setting on CTAF, when not received procedure NA. Inoperative table does not apply to S-LOC 1 Cat A. For inoperative MALSR, increase S-ILS 1 all Cats visibility to 2 3/4 mile.

MALSR

MISSED APPROACH: Climb to 9000, then climbing right turn to 10100 direct TARGY LOM and hold.

AWOS-3P

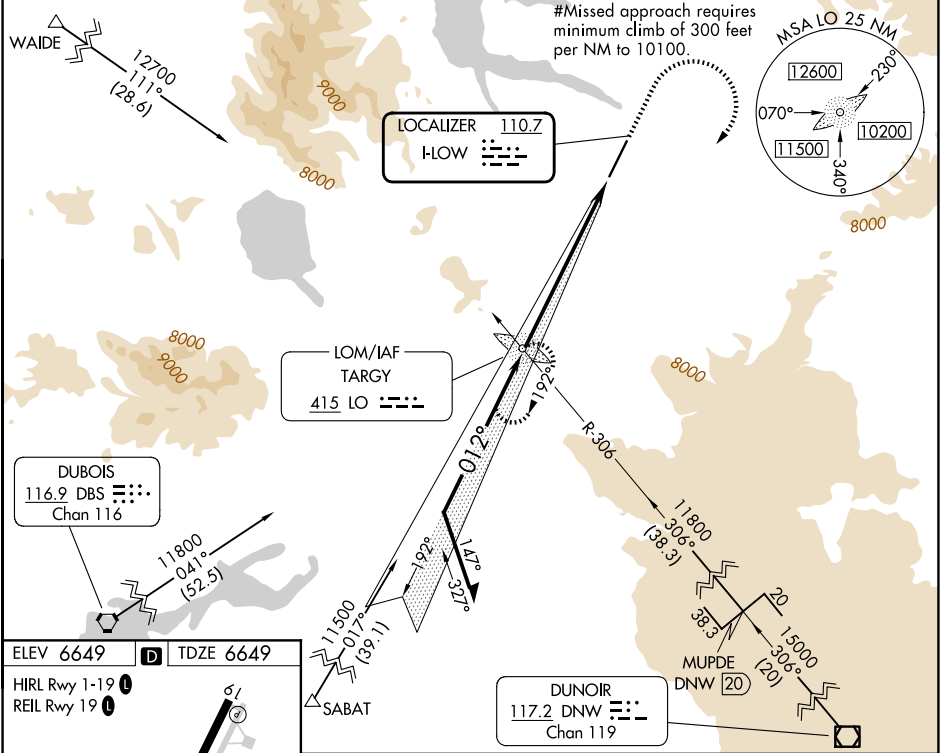
118.1

SALT LAKE CENTER

132.4 338.3

UNICOM

123.0 (CTAF)



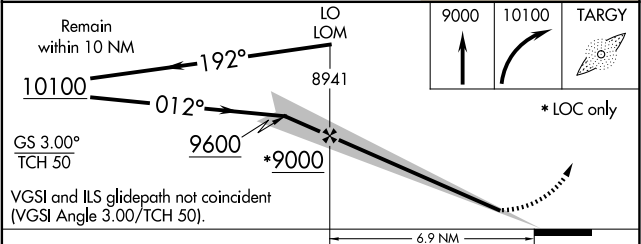
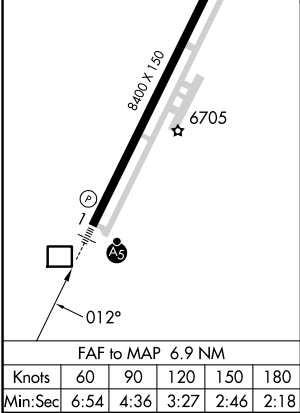
ELEV 6649

D

TDZE 6649

HIRL Rwy 1-19

REIL Rwy 19



CATEGORY	A	B	C	D
S-ILS 1#		6849-1/2	200 (200-1/2)	
S-ILS 1		7449-2 1/4	800 (800-2 1/4)	
S-LOC 1	7780-1 1/4 1131 (1200-1 1/4)	7780-1 1131 (1200-1)	7780-2 1/2 1131 (1200-2 1/2)	
CIRCLING	7780-1 1/4 1131 (1200-1 1/4)	7780-1 1/2 1131 (1200-1 1/2)	7780-3 1131 (1200-3)	8020-3 1371 (1400-3)