


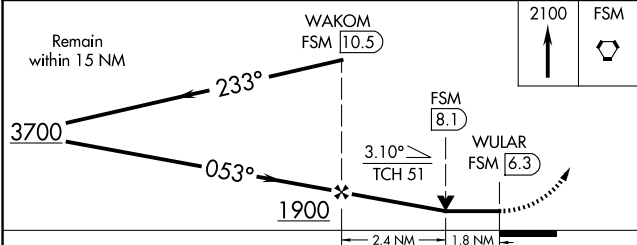
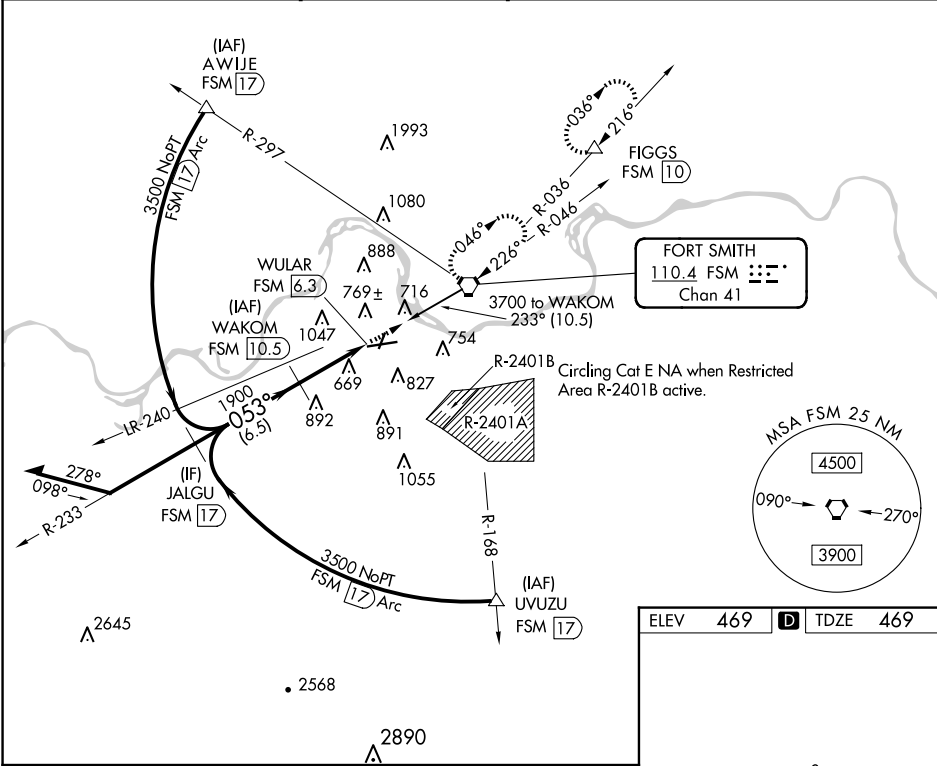


VORTAC FSM	APP CRS	Rwy Idg	9318
110.4	053°	TDZE	469
Chan 41		Apt Elev	469

VOR Z or TACAN Z RWY 8
FORT SMITH RGNL (FSM)

DME required.		MALSR 	MISSED APPROACH: Climb to 2100 direct FSM VORTAC and hold, continue climb-in-hold to 3300. (TACAN aircraft climbing left turn to 4000 direct FSM VORTAC then on FSM VORTAC R-036 to FIGGS/10 DME and hold NE, RT, 216° inbound).
  ASR	Circling NA for Cat E northwest of Rwy 8 and of Rwy 20. Circling Rwy 20, 26 NA at night. Rwy 8 helicopter visibility reduction below ¾ SM NA. Inop table does not apply.		

ATIS 124.775	RAZORBACK APP CON ★ 120.9 343.75	FORT SMITH TOWER ★ 118.3(CTAF) 323.175	GND CON 121.9 275.8	CLNC DEL 133.85 278.3	UNICOM 122.95
------------------------	--	--	-------------------------------	---------------------------------	-------------------------



CATEGORY	A	B	C	D	E
S-8	1080-1	611 (700-1)	1080-1¾	611 (700-1¾)	
CIRCLING	1140-1	671 (700-1)	1400-2¾ 931 (1000-2¾)	1400-3	931 (1000-3)

