

VORTAC FSM	APP CRS	Rwy Idg	9318
110.4	225°	TDZE	448
Chan 41		Apt Elev	469

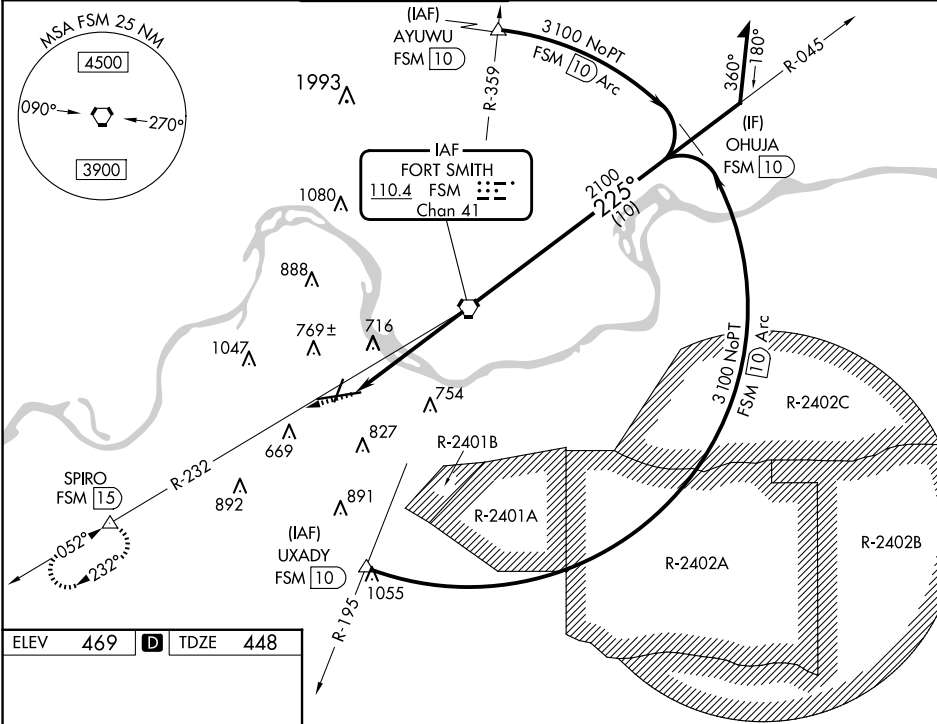
VOR Z or TACAN Z RWY 26  
FORT SMITH RGNL (FSM)

DME required.

▼ Rwy 26 helicopter visibility reduction below RVR 5000 NA. Inop table does not apply.  
▲ Circling Cat E NA when R-2401B active. Arc segment R-195 CCW: NA when restricted areas R-2401 and R-2402 in effect. Circling NA for Cat E northwest of Rwys 8 and Rwy 20. Straight-in Rwy 26 NA at night. Circling Rwy 20, 26 NA at night.

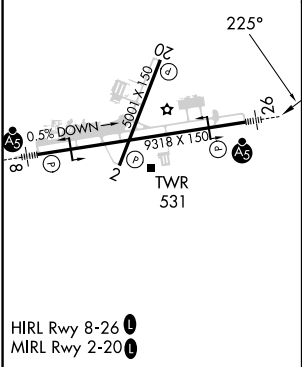
MALSR  
MISSED APPROACH: Climb to 4000 on FSM VORTAC R-232 to SPIRO/15 DME and hold, continue climb-in-hold to 4000.

ATIS	RAZORBACK APP CON*	FORT SMITH TOWER*	GND CON	CLNC DEL	UNICOM
124.775	120.9 343.75	118.3 (CTAF) 323.175	121.9 275.8	133.85 278.3	122.95



ELEV	469	TDZE	448
------	-----	------	-----

Procedure NA for arrival on FSM VORTAC airway radials 036 CW 090.



4000 ↑ FSM R-232	SPIRO △	FSM VORTAC	Remain within 15 NM		
FSM 4.9 4.9 NM					
CATEGORY	A	B	C	D	E
S-26	980/55 532 (600-1)		980-1½ 532 (600-1½)		
CIRCLING	1140-1 671 (700-1)		1400-2¾ 931 (1000-2¾)		1400-3 931 (1000-3)