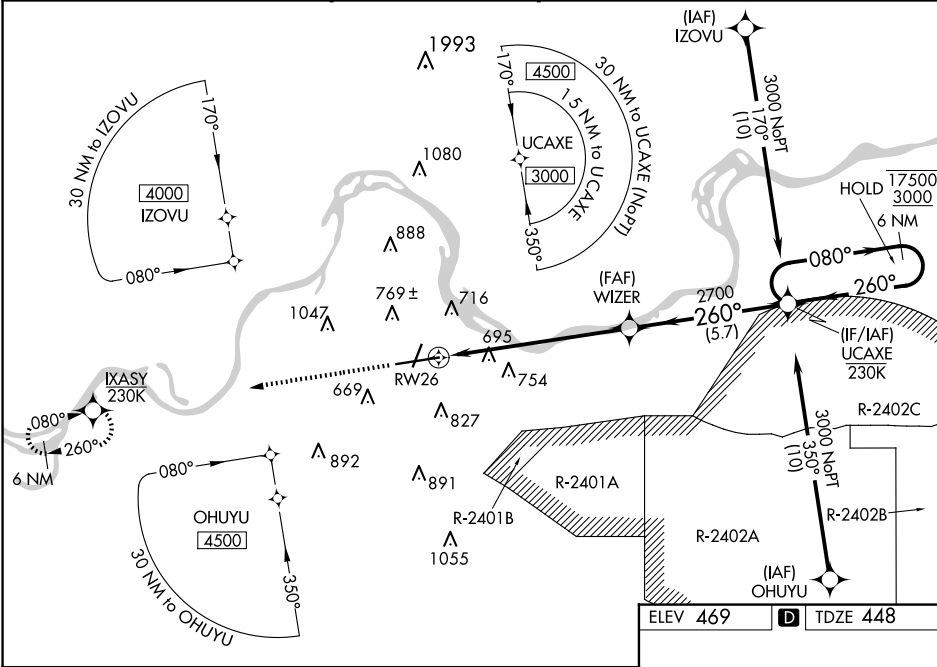


WAAS CH 87117 W26A	APP CRS 260°	Rwy Idg TDZE Apt Elev	9318 448 469
--	------------------------	-----------------------------	---

RNAV (GPS) RWY 26
FORT SMITH RGNL (F'SM)

RNP APCH - GPS.				<div>MALS R</div>	<div>MISSED APPROACH: Climb to 3000 direct IXASY and hold.</div>
<div><div><div>⚠</div><div>ASR</div></div><div>Circling NA for Cat E northwest of Rwy 8 and 20. Circling Rwy 20, 26 NA at night. For uncompensated Baro-VNAV systems, LNAV/VNAV NA below -11°C or above 54°C. Circling NA for Cat E NA when R-2401B active. For inop ALS, increase LPV Cat E visibility to RVR 4000, LNAV/VNAV all Cat E visibility to 1½ SM, and LNAV Cat E visibility to 1½ SM. *RVR 1800 authorized with use of FD or AP or HUD to DA.</div></div>					
ATIS	RAZORBACK APP CON *	FORT SMITH TOWER *	GND CON	CLNC DEL	UNICOM
124.775	120.9 343.75	118.3 (CTAF) 0 323.175	121.9 275.8	133.85 278.3	122.95



3000

↑

IXASY

UCAXE

6 NM Holding Pattern

1.6 NM to RW26

1.6 NM

5.3 NM

5.7 NM

WIZER

2700

2700

080°

260°

17500

3000

GP 3.00°

TCH 50

CATEGORY	A	B	C	D	E
LPV DA *	648/24		200 (200-½)		
LNAV/VNAV DA	962/55		514 (500-1)		
LNAV MDA	1000/24 552 (600-½)		1000/60 552 (600-1¼)		
CIRCLING	1140-1 671 (700-1)		1400-2¾ 931 (1000-2¾)	1400-3 931 (1000-3)	

