

HI-VOR Y or TACAN Y RWY 8

VORTAC FSM 110.4 Chan 41	APCH CRS 053°	Rwy Idg 9317 TDZE 469 Arpt Elev 469
--	-------------------------	--

[USAF] FORT SMITH RGNL (EBBING FLD ANGB) (KFSM)

DME required

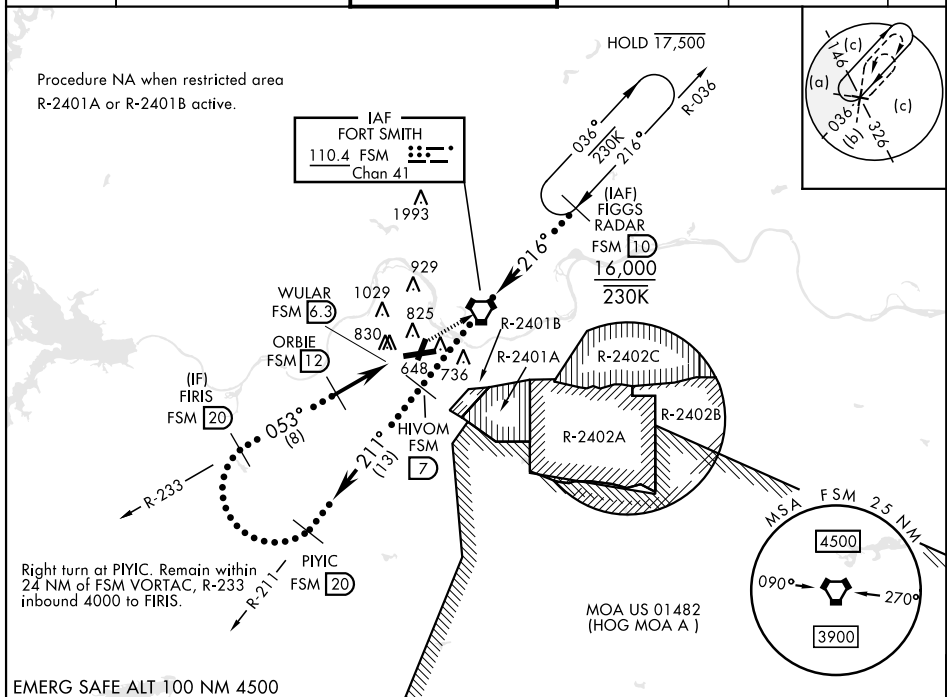
MALSR

MISSED APPROACH: Climb to 4000 direct
FSM VORTAC and on R-036 to FIGGS
(FSM R-036/10 DME) and hold.

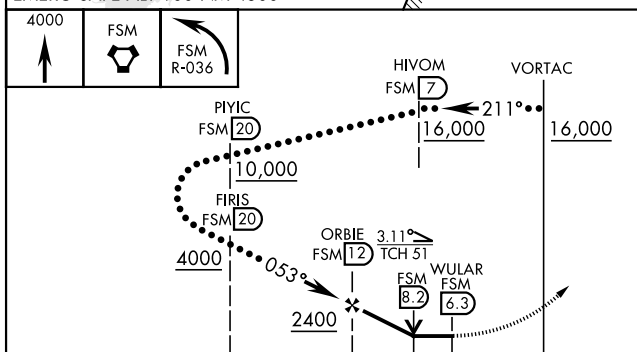
T *Circling not authorized for CAT E NW of Rwy 8 and 20.
Circling to Rwy 20 and Rwy 26 not authorized at night.

ATIS 124.775	RAZORBACK APP CON ★ 120.9 343.75	TOWER ★ 118.3 (CTAF) 0 323.175	GND CON 121.9 275.8	CLNC DEL 133.85 278.3	ASR
-----------------	-------------------------------------	-----------------------------------	------------------------	--------------------------	-----

Procedure NA when restricted area
R-2401A or R-2401B active.



EMERG SAFE ALT 100 NM 4500



		← 5.7 NM →			
CATEGORY	C	D	E		
S-8	1120-17 $\frac{1}{8}$		651	(700-17 $\frac{1}{8}$)	
C CIRCLING*	1400-2 $\frac{3}{4}$ 931 (1000-2 $\frac{3}{4}$)	1400-3	931	(1000-3)	

FORT SMITH, ARKANSAS

35°20'N-94°22'W

FORT SMITH RGNL (EBBING FLD ANGB) (KF5M)

Amdt 7C 21MAR24

HI-VOR Y or TACAN Y RWY 8

SC-1, 07 AUG 2025 to 04 SEP 2025