

NEW ORLEANS, LOUISIANA

VOR/DME or TACAN Z RWY 4

VORTAC HRV 114.1 Chan 88	APCH CRS 046°	Rwy Idg TDZE Arpt Elev 10,000 -2 2
--------------------------------	------------------	---

[USN]

NEW ORLEANS NAS JRB
(ALVIN CALLENDER FLD) (KNBG)

RNAV required

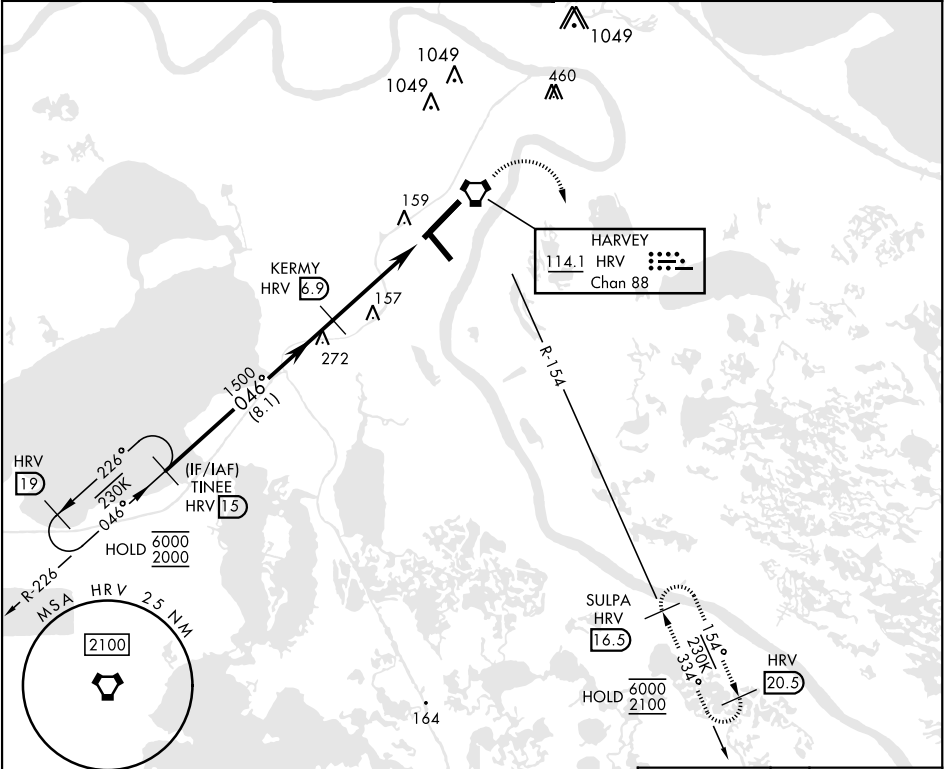
When ALS inop, increase CAT AB vis to 1 mile;
CAT CD vis to 1¾ miles.

ALSF-1

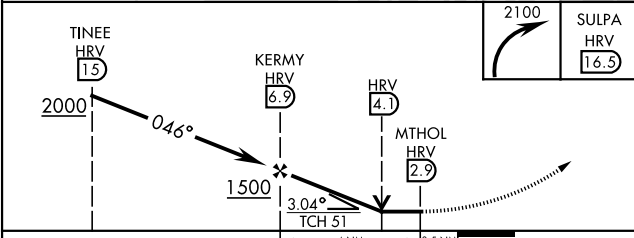


MISSED APPROACH: Climbing right turn to 2100
direct SULPA and hold.

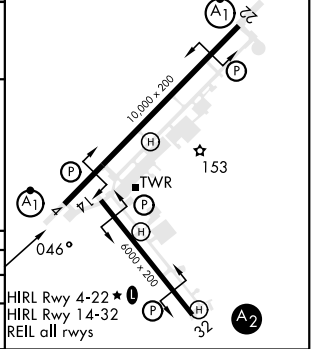
ATIS ★ 279.55	APP CON 123.85 256.9	NAVY NEW ORLEANS TOWER ★ 123.8 340.2 (CTAF)	GND CON 121.6 270.35	CLNC DEL 128.35 263.0	ASR/ PAR
------------------	-------------------------	--	-------------------------	--------------------------	-------------



EMERG SAFE ALT 100 NM 3000	ELEV 2	TDZE -2
----------------------------	--------	---------



CATEGORY	A	B	C	D
S-4 *	600-½ 602 (600-½)	600-1¾ 602 (600-1¾)	600-1¾ 602 (600-1¾)	600-1¾ 602 (600-1¾)
CIRCLING	640-1 638 (700-1)	640-1¾ 638 (700-1¾)	640-1¾ 638 (700-1¾)	640-1¾ 638 (700-1¾)



NEW ORLEANS, LOUISIANA

29° 50' N-90° 02' W

NEW ORLEANS NAS JRB (KNBG)

Amtd 1 20MAR25

VOR/DME or TACAN Z RWY 4

SC-4, 07 AUG 2025 to 04 SEP 2025

SC-4, 07 AUG 2025 to 04 SEP 2025