

NEW ORLEANS, LOUISIANA

RNAV (GPS) RWY 32

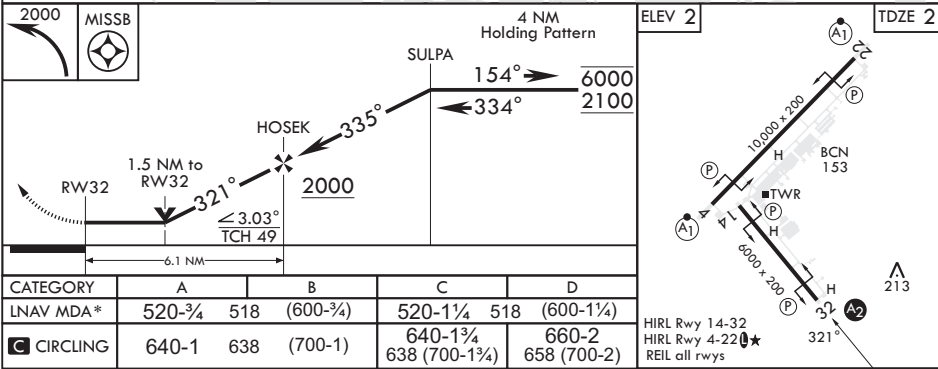
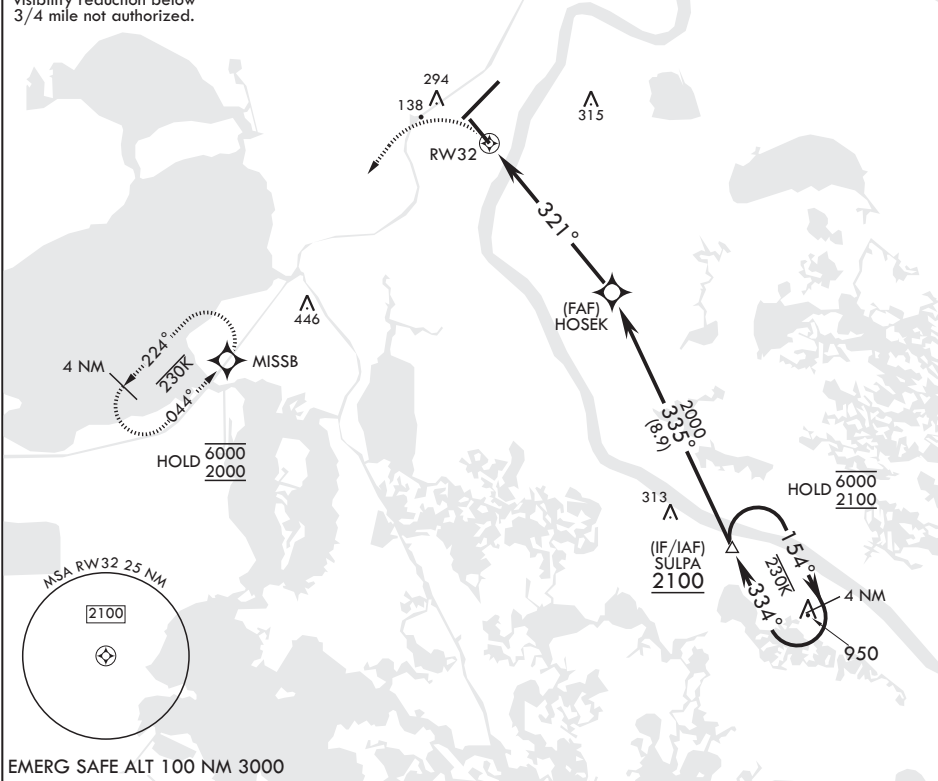
APCH CRS	Rwy Idg	6000
321°	TDZE	2
	Arprt Elev	2

- (USN)

NEW ORLEANS NAS JRB (ALVIN CALLENDER FLD) (KNBG)

RNP APCH-GPS			SALS	MISSED APPROACH: Climbing left turn to 2000 direct MISSB and hold.	
▼ * When ALS inop, increase CAT AB vis to 1 mile; CAT CD vis to 1 3/8 miles.			A2		
ATIS★ 279.55	APP CON/DEP CON 123.85 256.9	NAVY NEW ORLEANS TOWER★ 123.8 0★ 340.2 (CTAF)	GND CON 121.6 270.35	CLNC DEL 128.35 263.0	ASR/PAR

Rwy 32 helicopter visibility reduction below 3/4 mile not authorized.



NEW ORLEANS, LOUISIANA

29°50'N - 90°02'W NEW ORLEANS NAS JRB (ALVIN CALLENDER FLD) (KNBG)

Amdt 5 10JUL25

RNAV (GPS) RWY 32

SC-4, 07 AUG 2025 to 04 SEP 2025

SC-4, 07 AUG 2025 to 04 SEP 2025