

NEW ORLEANS, LOUISIANA

RNAV (GPS) RWY 22

WAAS CH 60141 W22A	APCH CRS 224°	Rwy Idg 10,000 TDZE 0 Arpt Elev 2
--	-------------------------	--

- (USN)

NEW ORLEANS NAS JRB (ALVIN CALLENDER FLD) (KNBG)

RNP APCH-GPS

T * When ALS inop, increase vis to 3/4 mile.
** When ALS inop, increase vis to 1 1/8 miles.

ALSF-1

MISSED APPROACH: Climbing left turn to 2000 direct MISSB and hold.

ATIS★ 279.55	APP CON/DEP CON 123.85 256.9	NAVY NEW ORLEANS TOWER★ 123.8 0★ 340.2 (CTAF)	GND CON 121.6 270.35	CLNC DEL 128.35 263.0	ASR/PAR
-----------------	---------------------------------	--	-------------------------	--------------------------	---------

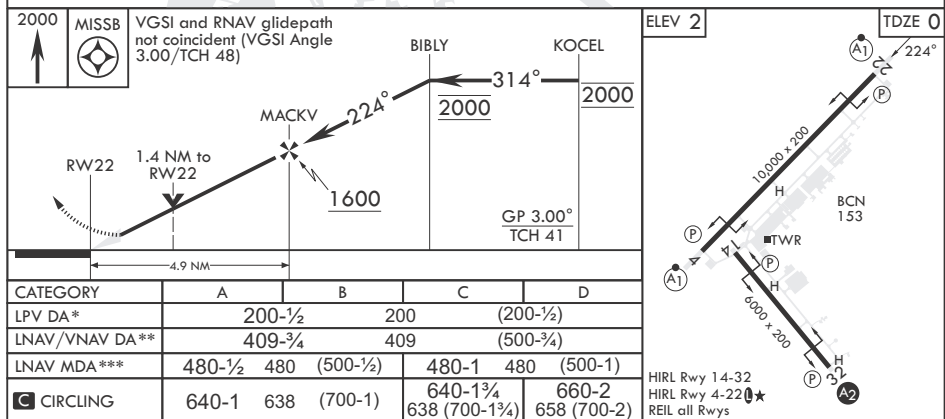
*** When ALS inop, increase
CAT AB vis to 1 mile; CAT
CD vis to 1 3/8 miles.

For uncompensated
Baro-VNAV systems,
LNAV/VNAV NA below -15°C
(5°F) or above 54°C (129°F).

CAUTION: TCH (41') is less than min TCH (45') for aircraft similar to B-747/767/720/757, DC-10, A-300, KC-10, E-4, C-5, and VC-25.



EMERG SAFE ALT 100 NM 3000



NEW ORLEANS, LOUISIANA

29°50'N - 90°02'W NEW ORLEANS NAS JRB (ALVIN CALLENDER FLD) (KNBG)

Amdt 4 20MAR25

RNAV (GPS) RWY 22

SC-4, 07 AUG 2025 to 04 SEP 2025

SC-4, 07 AUG 2025 to 04 SEP 2025