

LOC I-NBG 109.5	APCH CRS 044°	Rwy ldg TDZE Arpt Elev 10,000 -2 2
---------------------------	-------------------------	--

[USN]

ILS or LOC/DME RWY 4

NEW ORLEANS NAS JRB
(ALVIN CALLENDER FLD) (KNBG)

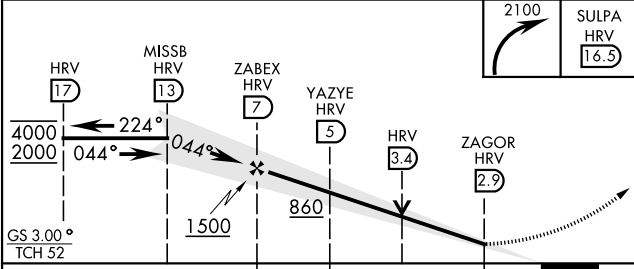
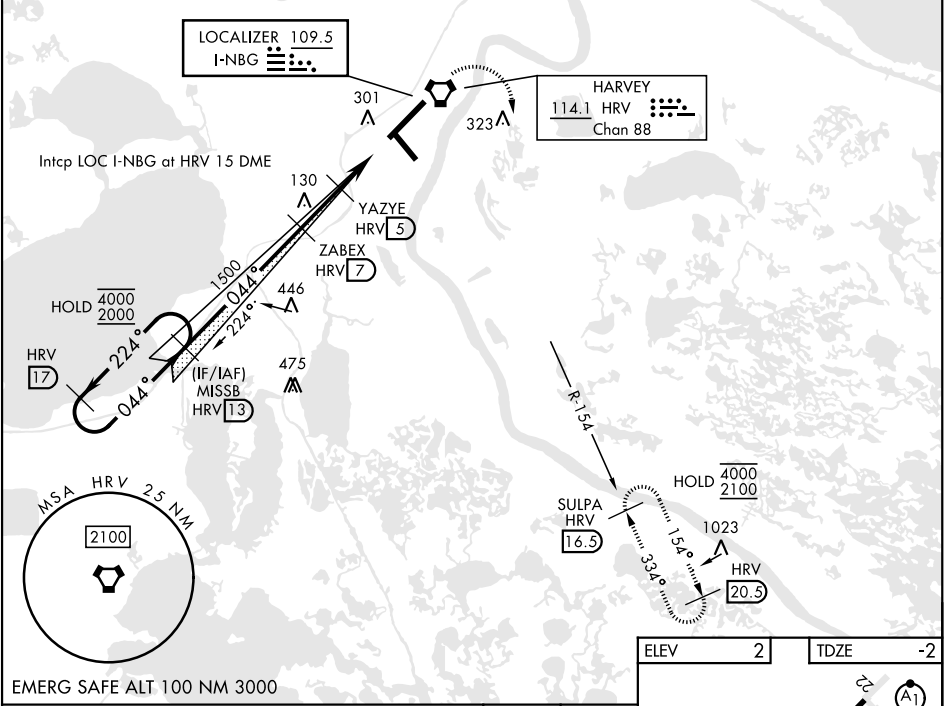
RNAV required

- * When ALS inop, increase vis to ¾ mile.
- ** When ALS inop, increase CAT AB vis to 1 mile;
CAT CDE vis to 1½ miles.
- *** Circling not authorized for CAT E NW of Rwy 4-22.

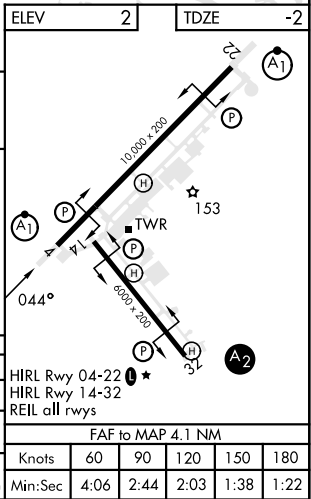


MISSED APPROACH: Climbing right turn to 2100
direct SULPA and hold.

ATIS ★ 279.55	APP CON 123.85 256.9	NAVY NEW ORLEANS TOWER ★ 123.8 340.2 (CTAF)	GND CON 121.6 270.35	CLNC DEL 128.35 263.0	ASR/ PAR
-------------------------	--------------------------------	---	--------------------------------	---------------------------------	-------------



CATEGORY	A	B	C	D	E
S-ILS 4 *	198-½		200	(200-½)	
S-LOC 4 **	380-½	382 (400-½)	380-⅝	382	(400-⅝)
CIRCLING ***	640-1	638 (700-1)	640-1¾ 638 (700-1¾)	660-2 658 (700-2)	680-2½ 678 (700-2½)



ILS or LOC/DME RWY 4

SC-4, 07 AUG 2025 to 04 SEP 2025

SC-4, 07 AUG 2025 to 04 SEP 2025