

VOR/DME CNG	APP CRS	Rwy Ldg	6500
113.1	042°	TDZE	411
Chan 78		Apt Elev	411

VOR RWY 5
BARKLEY RGNL (PAH)

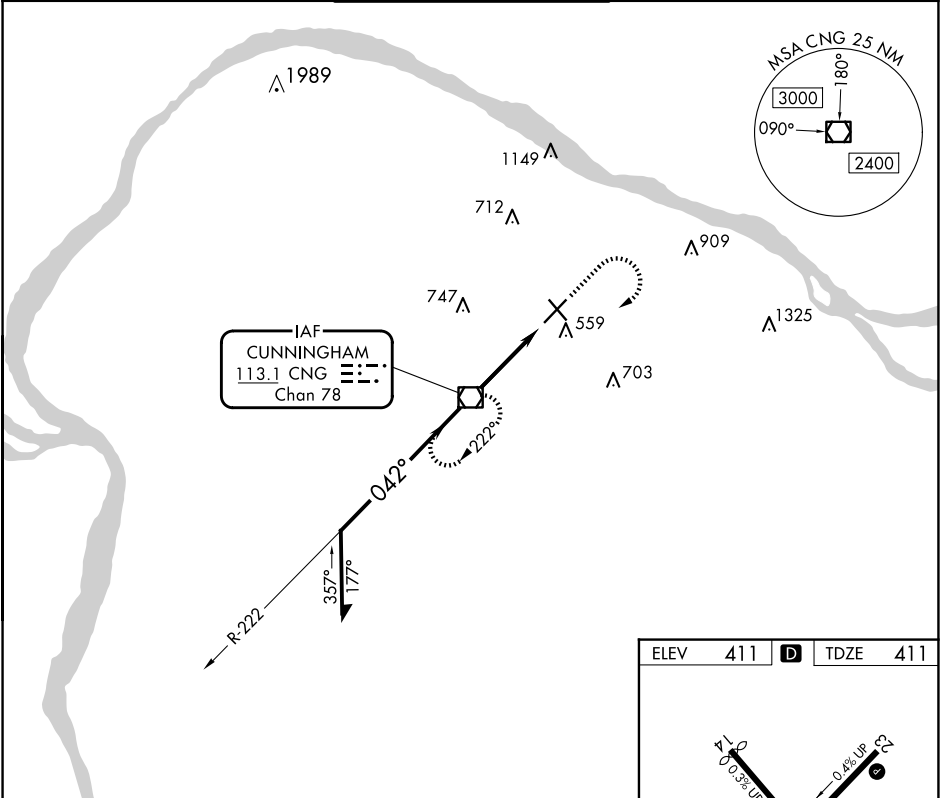
⚠ When local altimeter setting not received, use Mayfield altimeter setting and increase all MDAs 80 feet, and increase S-5 Cat C and D visibility ¼ SM and increase Circling Cat D visibility ¼ SM. VDP NA when using Mayfield altimeter setting.

MALSR

A5

MISSED APPROACH: Climb to 1100 then climbing right turn to 2100 direct CNG VOR/DME and hold.

ASOS 118.375	MEMPHIS CENTER 133.65 292.15	PADUCAH TOWER ★ 119.6 (CTAF) 306.9	GND CON 121.7 306.9	UNICOM 122.95
-----------------	---------------------------------	---------------------------------------	------------------------	------------------



Remain within 10 NM

CNG VOR/DME

2100

222°

042°

1700

3.08° TCH 55

2.6 NM

1.2

	1100	2100	CNG
	↑	↷	☐
	CNG 2.6		CNG 3.8

CATEGORY	A	B	C	D
S-5	860-½ 449 (500-½)	860-¾ 449 (500-¾)	860-1 449 (500-1)	860-1 449 (500-1)
CIRCLING	900-1 489 (500-1)	920-1½ 509 (600-1½)	1100-2¼ 689 (700-2¼)	

ELEV	411	TDZE	411
------	-----	------	-----

HIRL Rwy 5-23

MIRL Rwy 14-32

REIL Rwy 23 and 32

FAF to MAP 3.8 NM

Knots	60	90	120	150	180
Min:Sec	3:48	2:32	1:54	1:31	1:16

SE-1, 07 AUG 2025 to 04 SEP 2025

SE-1, 07 AUG 2025 to 04 SEP 2025