

VOR/DME CNG 113.1 Chan 78	APP CRS 221°	Rwy Ldg 6500 TDZE 402 Apt Elev 411
---	------------------------	---

VOR RWY 23
BARKLEY RGNL (PAH)

DME required.

Rwy 23 helicopter visibility reduction below $\frac{3}{4}$ SM NA.

MISSED APPROACH: Climb to 2600 direct CNG VOR/DME and hold, continue climb-in-hold to 2600.

ASOS 118.375	MEMPHIS CENTER 133.65 292.15	PADUCAH TOWER ★ 119.6 (CTAF) 0 306.9	GND CON 121.7 306.9	UNICOM 122.95
------------------------	--	--	-------------------------------	-------------------------

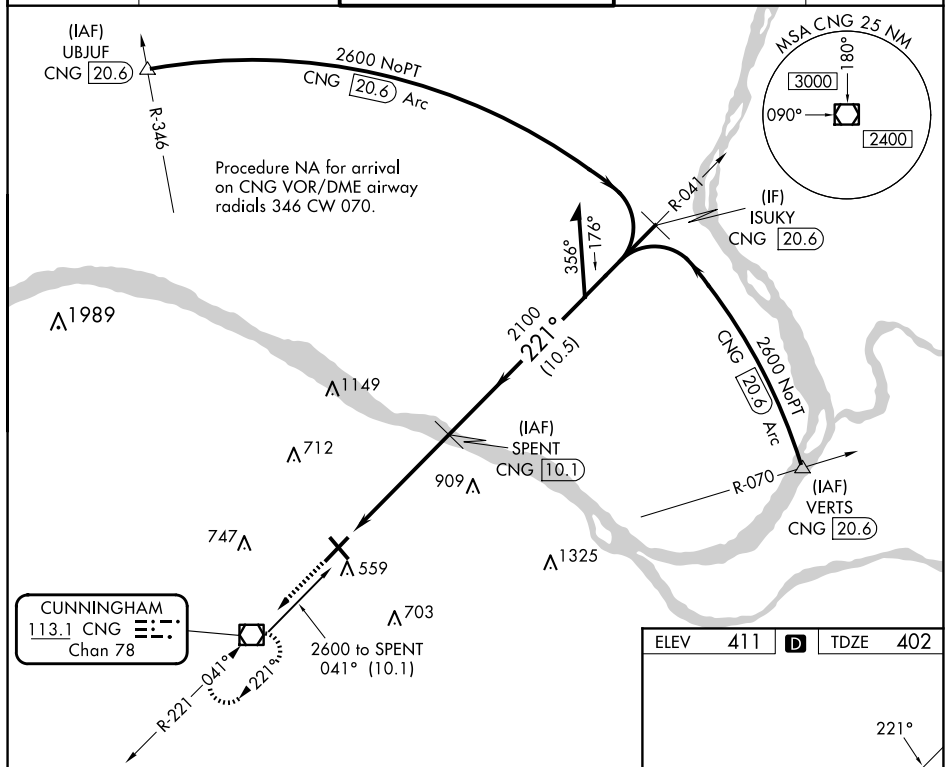


Diagram illustrating a VGS1 descent profile. The profile shows a descent from 2600 feet to 2100 feet, then a climb to 2200 feet, and finally a descent to 2200 feet. The descent angle is 3.00°. The distance from the start of the descent to the 2100 feet altitude is 39 NM. The diagram also shows a VGS1 angle of 3.00/TCH 50. The VGS1 and descent angles are not coincident. The diagram includes a table with the following data:

Altitude	Distance	Angle
2600	0.0	0.00
2400	10.1	0.00
2200	20.2	0.00
2100	39.0	3.00
2200	49.1	0.00

CATEGORY	A	B	C	D
S-23	860-1 458 (500-1)		860-1 $\frac{3}{8}$ 458 (500-1 $\frac{3}{8}$)	
C CIRCLING	900-1 489 (500-1)		920-1 $\frac{1}{2}$ 509 (600-1 $\frac{1}{2}$)	1100-2 $\frac{1}{4}$ 689 (700-2 $\frac{1}{4}$)

