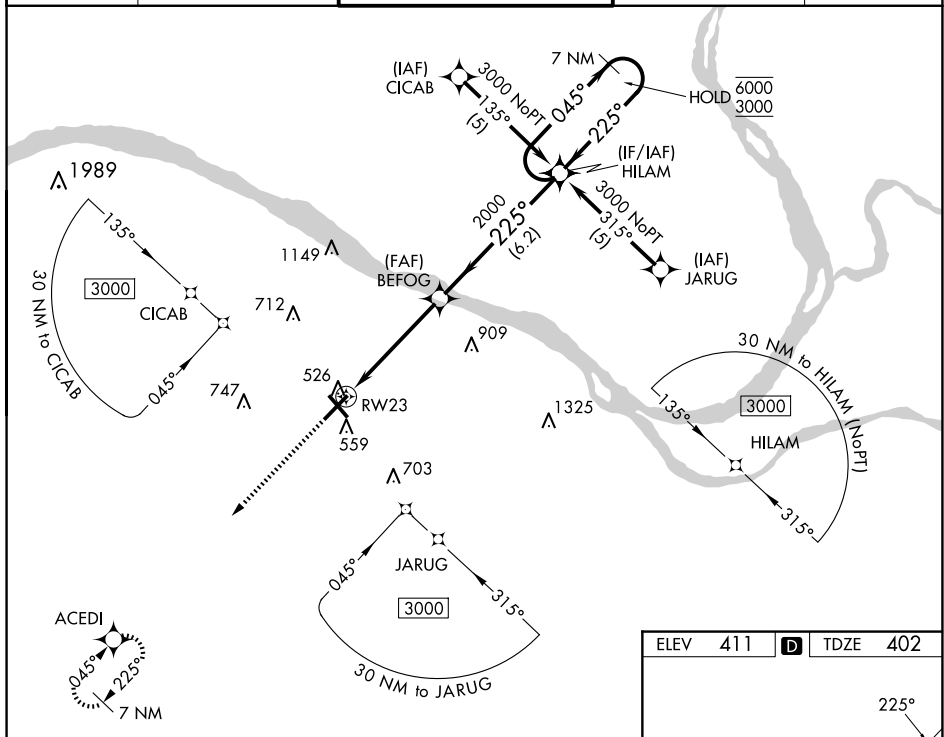


RNAV (GPS) RWY 23
BARKLEY RGNL (PAH)

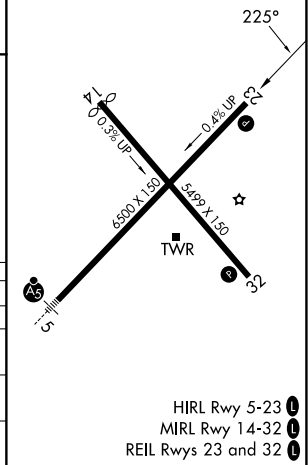
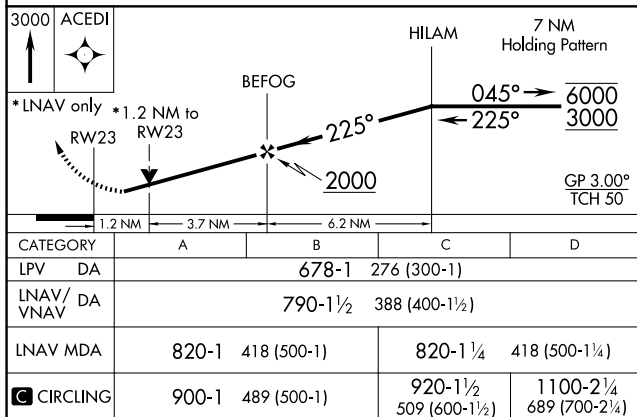
T Rwy 23 helicopter visibility reduction below $\frac{3}{4}$ SM NA.
A For uncompensated Baro-VNAV systems, LNAV/VNAV NA below -15°C or above 54°C.

MISSED APPROACH:
Climb to 3000 direct
ACEDJ and hold.

ASOS 118.375	MEMPHIS CENTER 133.65 292.15	PADUCAH TOWER ★ 119.6 (CTAF) 0 306.9	GND CON 121.7 306.9	UNICOM 122.95
------------------------	--	--	-------------------------------	-------------------------



ELEV	411	D	TDZE	402
------	-----	----------	------	-----



SE-1, 07 AUG 2025 to 04 SEP 2025