

WAAS CH <b>97412</b> <b>W36A</b>	APP CRS <b>004°</b>	Rwy Ldg TDZE <b>343</b> Apt Elev <b>344</b>
--	------------------------	---

RNAV (GPS) RWY 36

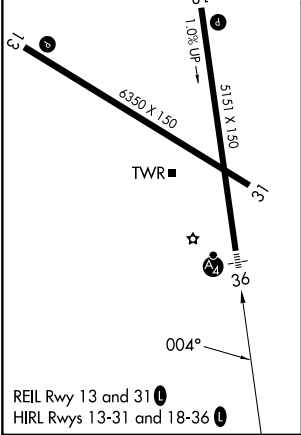
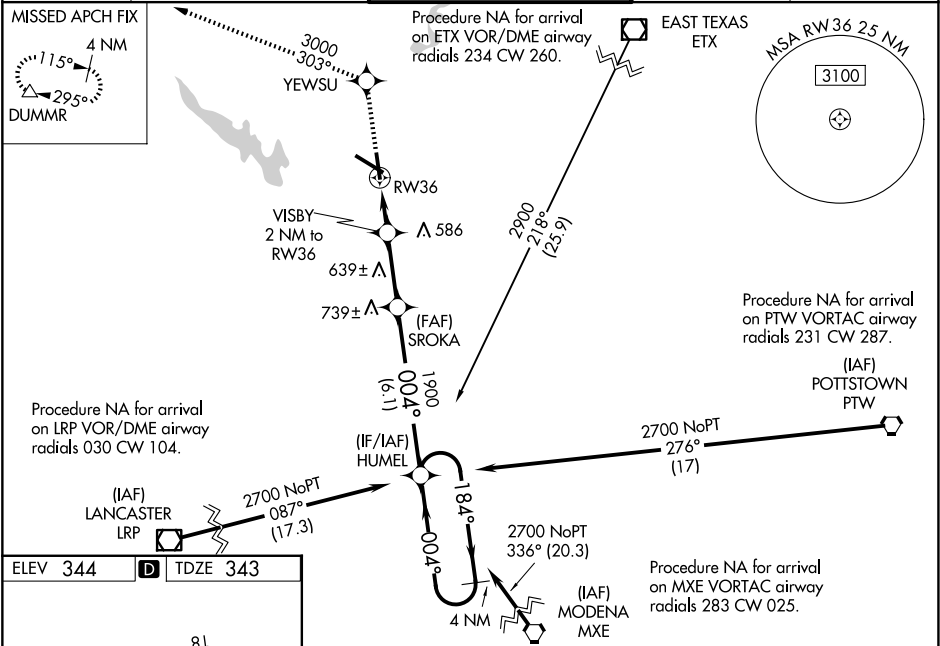
READING RGNL/CARL A SPAATZ FLD (RDG)

Night landing: Rwy 18, 31 NA. Inoperative table does not apply. Baro-VNAV NA when using Harrisburg Intl altimeter setting. For uncompensated Baro-VNAV systems, LNAV/VNAV NA below -15°C (5°F) or above 48°C (118°F). DME/DME RNP-0.3 NA. When local altimeter setting not received, use Harrisburg Intl altimeter setting and increase LPV DA to 715 feet and visibility ¼ SM, increase LNAV/VNAV DA to 928 feet and visibility ¼ SM and increase all MDAs 100 feet, and LNAV Cats C and D and Circling Cats B and C visibility ¼ SM.

MALSF

MISSED APPROACH:  
Climb to 3000 direct YEWSU and via 303° to DUMMR and hold, continue climb-in-hold to 3000.

ATIS <b>127.1</b>	HARRISBURG APP CON <b>125.15 257.9</b>	READING TOWER ★ <b>119.9 (CTAF) 0 288.3</b>	GND CON <b>121.9</b>	UNICOM <b>122.95</b>
----------------------	---	--	-------------------------	-------------------------



3000	YEWSU	tr	DUMMR	HUMEL	4 NM Holding Pattern
		303°			
*LNAV only					
	VISBY 2 NM to RW36		1900		
	*1.1 NM to RW 36		1020*		
	1.1	0.9	2.7 NM	6.1 NM	
CATEGORY	A	B	C	D	
LPV DA	622-1 279 (300-1)				
LNAV/ VNAV DA	835-1¾ 492 (500-1¾)				
LNAV MDA	740-1 397 (400-1)				740-1¼ 397 (400-1¼)
CIRCLING	1020-1 676 (700-1)	1080-1 736 (800-1)	1280-2¾ 936 (1000-2¾)	1660-3 1316 (1400-3)	