

APP CRS  
184°

Rwy Ldg  
TDZE  
Apt Elev

5151  
319  
344

RNAV (GPS) RWY 18

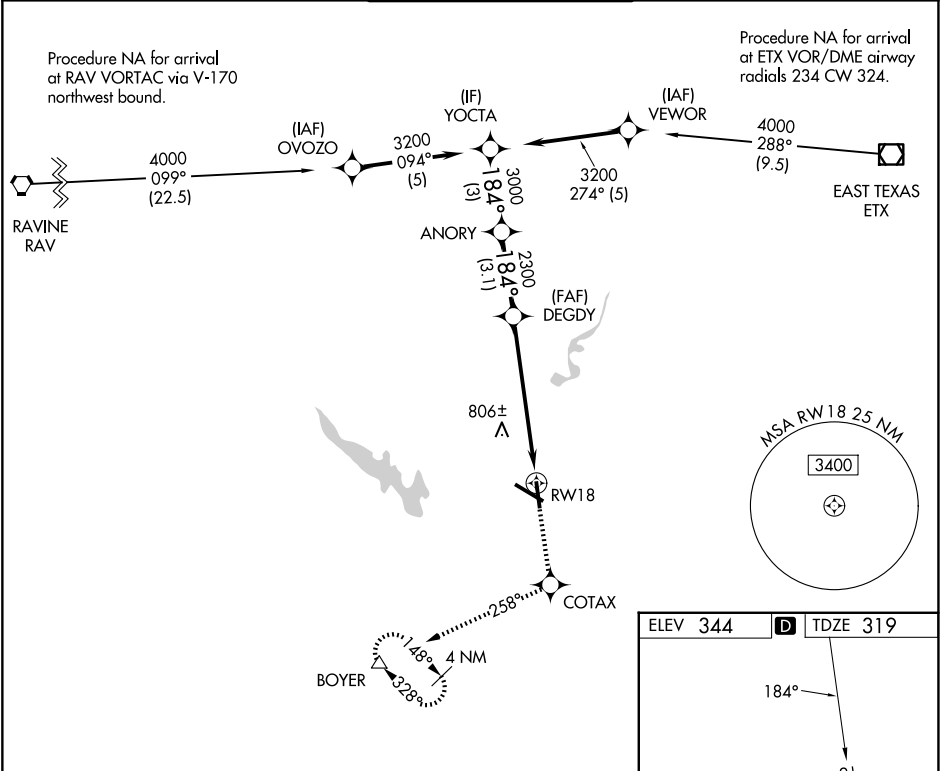
READING RGNL/CARL A SPAATZ FLD (RDG)

⚠

Night landing: Rwy 18, 31 NA. DME/DME RNP-0.3 NA. Helicopter visibility reduction below 1 SM NA. When local altimeter setting not received, use Harrisburg Init altimeter setting and increase all MDAs 100 feet, and increase LNAV Cat B visibility ¼ SM and Cat C and D visibility ½ SM, and increase Circling Cats B and C visibility ¼ SM.

MISSED APPROACH: Climb to 3000 direct COTAX and via 258° track to BOYER and hold, continue climb-in-hold to 3000.

ATIS 127.1	HARRISBURG APP CON 125.15 257.9	READING TOWER ★ 119.9 (CTAF) 0 288.3	GND CON 121.9	UNICOM 122.95
---------------	------------------------------------	---	------------------	------------------



YOCTA  
3200

ANORY

DEGDY

RW18

Procedure Turn NA

184°

3000

2300

3.05°

TCH 55

3 NM

3.1 NM

6 NM

3000

COTAX

BOYER

258° trk

CATEGORY	A	B	C	D
LNAV MDA	980-1	661 (700-1)	980-1¾ 661 (700-1¾)	980-2 661 (700-2)
CIRCLING	1020-1 676 (700-1)	1080-1 736 (800-1)	1280-2¾ 936 (1000-2¾)	1660-3 1316 (1400-3)

ELEV 344

D

TDZE 319

184°

81

1.0% Up

6350 X 150

5151 X 150

TWR

36

REIL Rwy 13 and 31  
HIRL Rws 13-31 and 18-36