

WAAS CH 86612 W29A	APP CRS 293°	Rwy Ldg 7011 TDZE 128 Apt Elev 132
--	------------------------	---

RNAV (GPS) Z RWY 29

LAURENCE G HANSCOM FLD (BED)

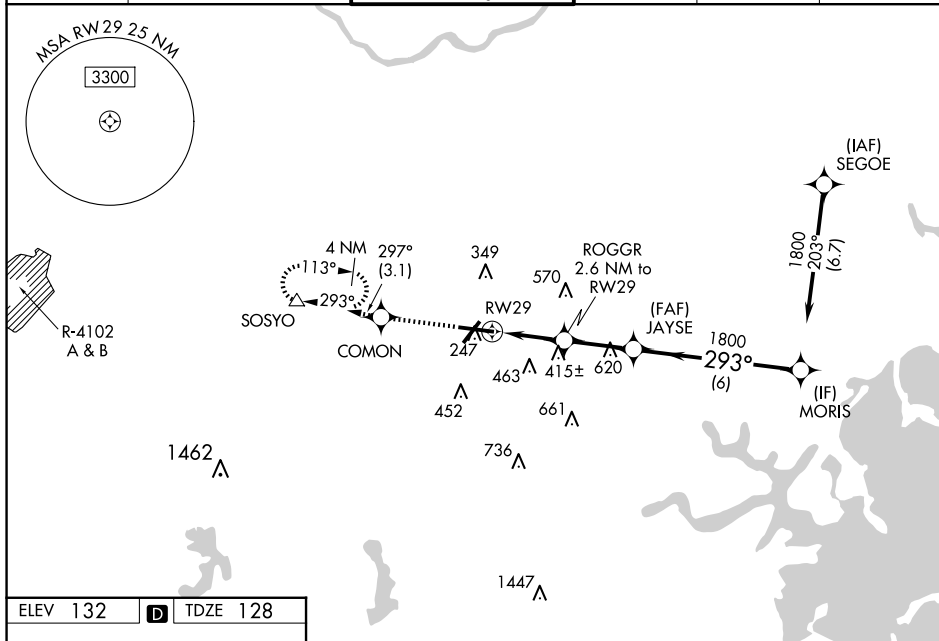
RNP APCH

▼ For uncompensated Ferro-VNAV systems, LNAV/VNAV NA below -16°C (4°F) or above 54°C (130°F), Baro-VNAV and VDP NA with Boston altimeter setting. When local altimeter setting not received, use Boston altimeter setting: increase LPV DA to 377 feet, LNAV/VNAV DA to 663 feet; increase all MDAs 60 feet and LNAV Cats C and D, and Circling Cat D visibility $\frac{1}{4}$ SM. For inop ALS, increase LNAV/VNAV all Cats visibility and LNAV Cat C/D to 1½ SM. For inop ALS when using Boston altimeter setting, increase LNAV/VNAV all Cats visibility to 1½ SM and LNAV Cat C/D to 1½ SM.

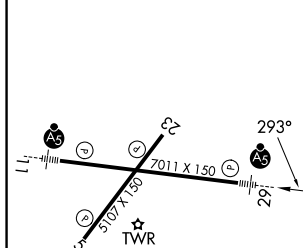
MALSI




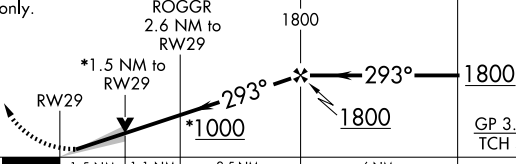

MISSED APPROACH:
Climb to 2000 direct
COMON and on
track 297° to SOSYO
and hold.

ATIS 124.6	BOSTON APP CON 124.4 279.6	HANSCOM TOWER ★ 118.5 (CTAF) 0 257.2	GND CON 121.7	CLNC DEL 121.85	UNICOM 122.95
----------------------	--------------------------------------	--	-------------------------	---------------------------	-------------------------



ELEV 132	D	TDZE 128
----------	----------	----------



2000	COMON	SOSYO		
		fr 297°		
				
*LNAV only.				
 <p>ROGGR 2.6 NM to RW29</p> <p>JAYSE 1800</p> <p>MORIS</p> <p>1800</p> <p>GP 3.00° TCH 55</p>				
CATEGORY	A	B	C	D
LPV DA	328-½		200 (200-½)	
LNAV/ VNAV DA	614-1⅓		486 (500-1⅓)	
LNAV MDA	640-½	512 (600-½)	640-1	512 (600-1)
 CIRCLING	720-1	588 (600-1)	880-2¼ 748 (800-2¼)	920-2½ 788 (800-2½)