

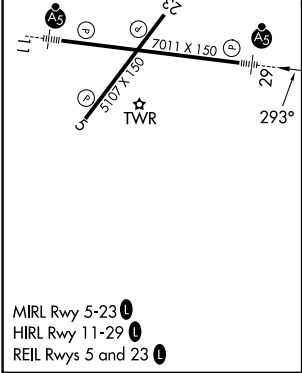
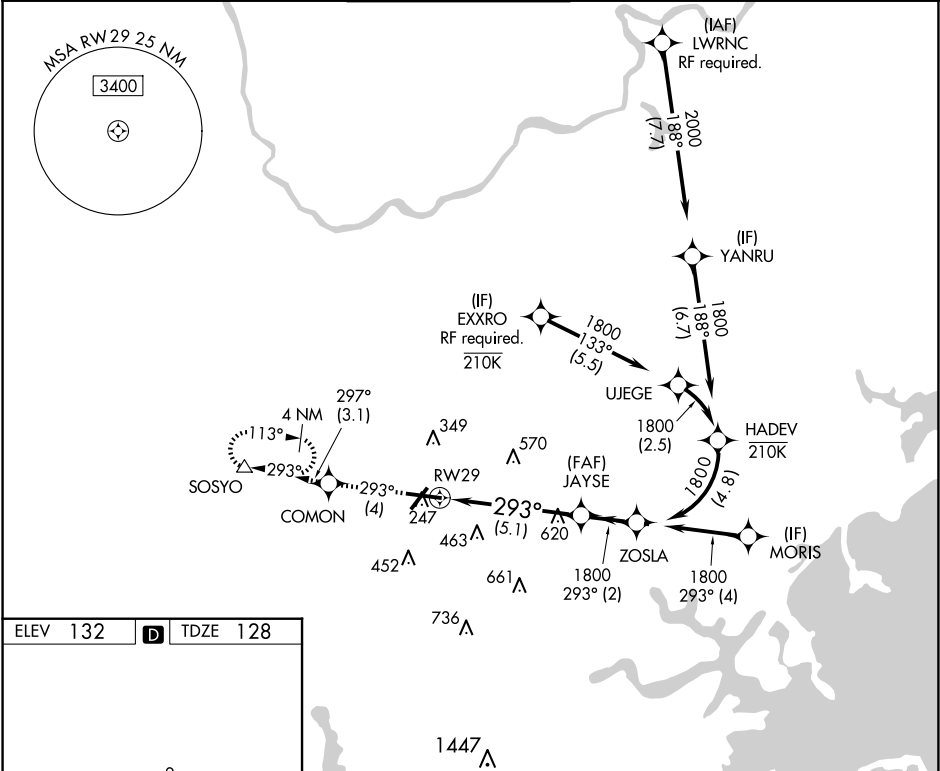
APP CRS	Rwy Ldg	7011
293°	TDZE	128
	Apt Elev	132




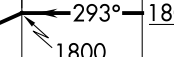
RNAV (RNP) Y RWY 29

LAURENCE G HANSCOM FLD (BED)

RNP AR APCH.	MALSR	MISSED APPROACH: Climb to 2000 on track 293° to COMON then on track 297° to SOSYO and hold.
For uncompensated Baro-VNAV systems, procedure NA below -19°C or above 54°C.		

ATIS 124.6	BOSTON APP CON 124.4 279.6	HANSCOM TOWER★ 118.5 (CTAF) 0 257.2	GND CON 121.7	CLNC DEL 121.85	UNICOM 122.95
---------------	-------------------------------	--	------------------	--------------------	------------------



2000	tr 293°	COMON	tr 297°	SOSYO	See planview for multiple IF locations.	
					JAYSE	ZOSLA
					1800	
						<u>1800</u>
						GP 3.00° TCH 55
					5.1 NM	2 NM
CATEGORY	A		B		C	D
RNP 0.30 DA	651-1 523 (600-1)					
AUTHORIZATION REQUIRED						

NE-1, 07 AUG 2025 to 04 SEP 2025

NE-1, 07 AUG 2025 to 04 SEP 2025