

LOC/DME I-ULJ 111.15 Chan 48(Y)	APP CRS 293°	Rwy Ldg 7011 TDZE 128 Apt Elev 132
---	------------------------	---

ILS or LOC RWY 29
LAURENCE G HANSCOM FLD (BED)

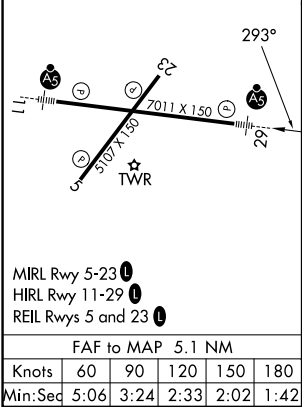
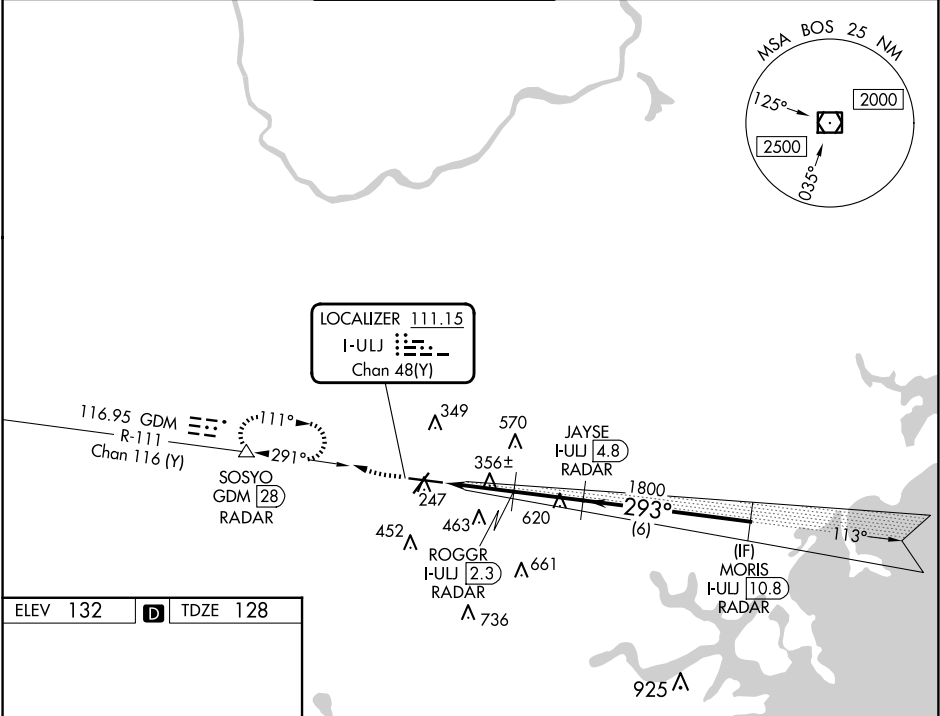
RADAR required for procedure entry. DME or RADAR required.

For inop ALS, increase S-LOC 29 Cats C and D to 1½ SM.

MALS

MISSED APPROACH: Climb to 1000 then climbing right turn to 2000 on GDM VOR/DME R-111 to SOSYO/GDM 28 DME/RADAR and hold.

ATIS 124.6	BOSTON APP CON 124.4 279.6	HANSCOM TOWER ★ 118.5 (CTAF) 0 257.2	GND CON 121.7	CLNC DEL 121.85	UNICOM 122.95
----------------------	--------------------------------------	--	-------------------------	---------------------------	-------------------------



1000	2000	SOSYO	JAYSE I-ULJ 4.8 RADAR	MORIS I-ULJ 10.8 RADAR
GDM R-111			ROGGR I-ULJ 2.3 RADAR	
*LOC only.	I-ULJ DME ANTENNA	I-ULJ 1.1	1800	1800
I-ULJ 0.3			1000*	1800
1.4 NM	1.2 NM	2.5 NM	6 NM	GS 3.00° TCH 55
CATEGORY	A	B	C	D
S-ILS 29	328-½	200 (200-½)		
S-LOC 29	620-½ 492 (500-½)	620-1 492 (500-1)		
CIRCLING	720-1 588 (600-1)	880-2¼ 748 (800-2¼)	920-2½ 788 (800-2½)	

NE-1, 07 AUG 2025 to 04 SEP 2025

NE-1, 07 AUG 2025 to 04 SEP 2025