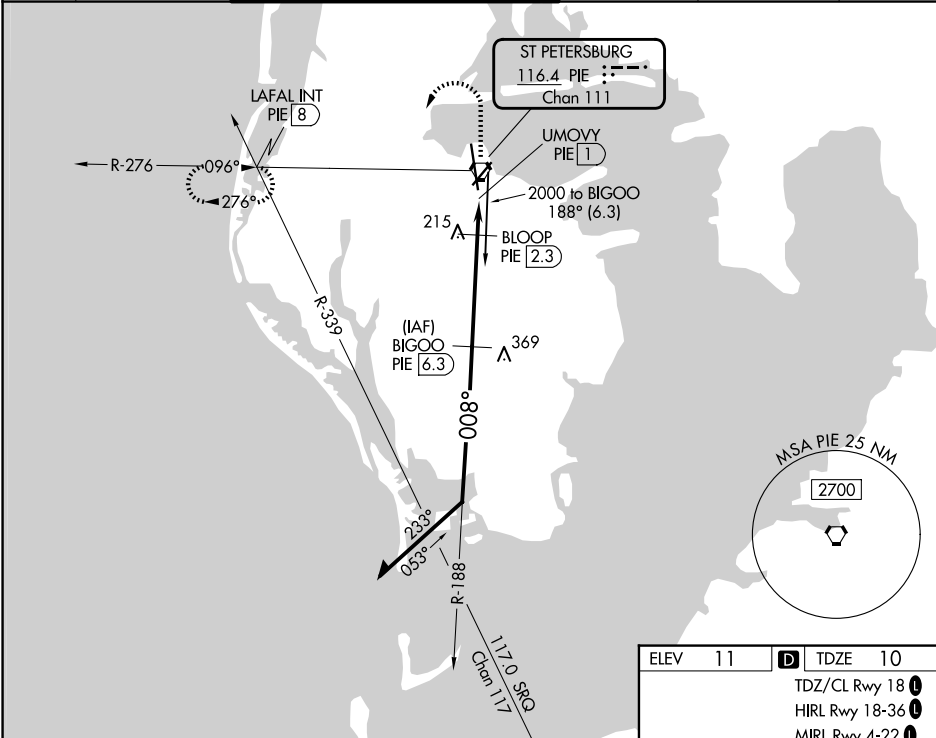


VORTAC PIE	APP CRS	Rwy Ldg	8720
116.4	008°	TDZE	10
Chan 111		Apt Elev	11

VOR RWY 36
ST PETE-CLEARWATER INTL (PIE)

DME required.		MISSED APPROACH: Climb to 1200 then climbing left turn to 1700 on heading 240° and PIE VORTAC R-276 to LAFAL INT/PIE 8 DME and hold.			
<div><div>▼</div><div>▲</div></div>	Circling Rwy 22 NA at night. Rwy 36 helicopter visibility reduction below RVR 5000 NA.				
ATIS 134.5	TAMPA APP CON 125.3 316.05	ST PETERSBURG-CLEARWATER TOWER ★ 118.3 (CTAF) 0 257.8	GND CON 121.9 348.6	CLNC DEL 120.6 350.2	UNICOM 122.95



VGSI and descent angles not coincident (VGSI Angle 3.00/TCH 76).				1200	1700	PIE R-276	LAFAL INT
Remain within 10 NM				↑	hdg 240°		
2000				188°	008°	2000	620
BIGOO PIE 6.3				3.13° TCH 60		BLOOP PIE 2.3	UMOVY PIE 1
4 NM				1.3 NM	0.5		
CATEGORY	A	B	C	D			
S-36	520-55	510 (600-1)	520-13/8	510 (600-13/8)			
CIRCLING	620-1	609 (700-1)	640-13/4 629 (700-13/4)	680-2 669 (700-2)			

