

LOC/DME I-PIE	APP CRS	Rwy Ldg	9180
109.1	176°	TDZE	7
Chan 28		Apt Elev	11

ILS or LOC RWY 18

ST PETE-CLEARWATER INTL (PIE)

DME, RADAR, or ADF required.

⚠

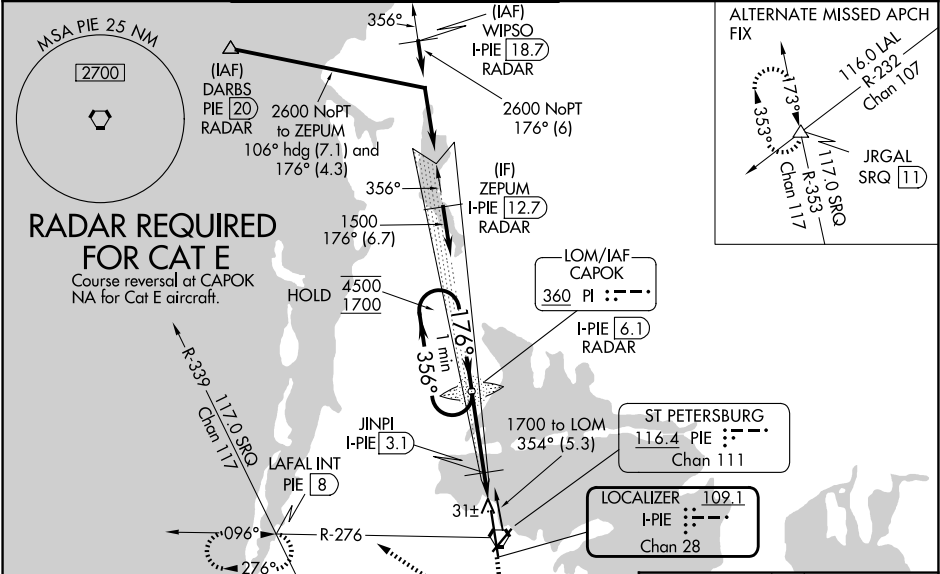
Circling Rwy 22 NA at night. For inop ALS, increase S-ILS 18 Cat E visibility to RVR 4000 and S-LOC 18 Cat E visibility to 1½ SM.

JINPI FIX MINIMUMS: For inop ALS, increase S-LOC 18 Cats C, D, and E visibility to RVR 4500.

MALSR

MISSED APPROACH: Climb to 600 then climbing right turn to 1700 on heading 330° and PIE VORTAC R-276 to LAFAL INT/PIE VORTAC 8 DME and hold, continue climb-in-hold to 1700.

ATIS	TAMPA APP CON	ST PETERSBURG-CLEARWATER TOWER ★	GND CON	CLNC DEL	UNICOM
134.5	125.3 316.05	118.3 (CTAF) 0 257.8	121.9 348.6	120.6 350.2	122.95



VGSI and ILS glidepath not coincident (VGSI Angle 3.00/TCH 68).
One Minute Holding Pattern

4500
1700

←356°→
176°→

1460

1500

460

31±

JINPI I-PIE 3.1

I-PIE 2.4

I-PIE 1.7

3 NM

0.6 NM

0.7 NM

Use I-PIE DME when on the localizer course.

CATEGORY	A	B	C	D	E
S-ILS 18	207/18 200 (200-½)				
S-LOC 18	460/24 453 (500-½) 460/45 453 (500-¾)				
CIRCLING	520-1 509 (600-1) 640-1¾ 680-2 960-3 629 (700-1¾) 669 (700-2) 949 (1000-3)				
JINPI FIX MINIMUMS					
S-LOC 18	300/24 293 (300-½)				
CIRCLING	520-1 509 (600-1) 640-1¾ 680-2 960-3 629 (700-1¾) 669 (700-2) 949 (1000-3)				

ELEV 11

D TDZE 7

176°→

81

4

2700 X 1.50

2700 X 1.50

8000 X 1.50

36

TWR

TDZ/CL Rwy 18 0

HIRL Rwy 18-36 0

MIRL Rwy 4-22 0

REIL Rws 4 and 22