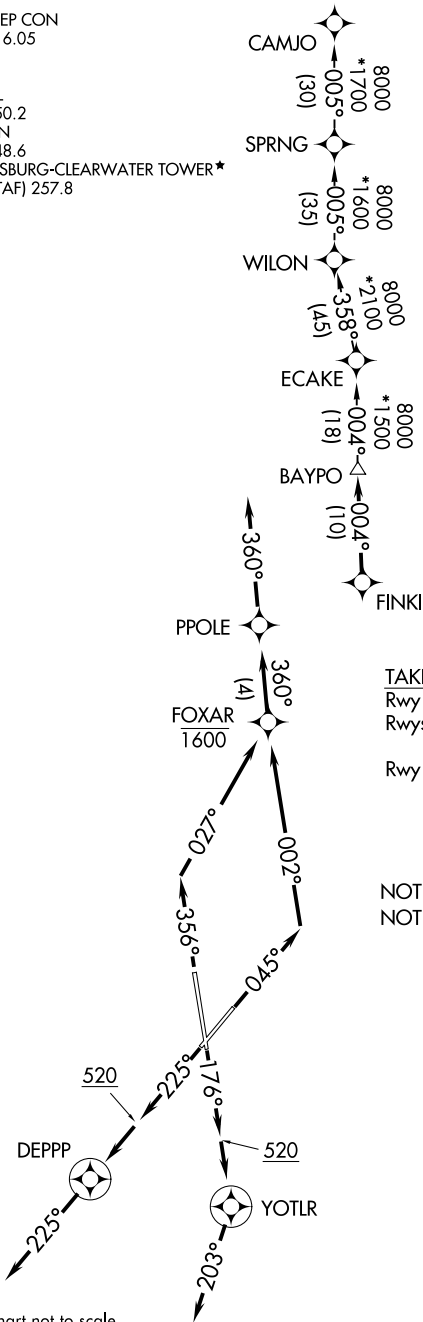


TAMPA DEP CON  
125.3 316.05  
ATIS  
134.5  
CLNC DEL  
120.6 350.2  
GND CON  
121.9 348.6  
ST. PETERSBURG-CLEARWATER TOWER\*  
118.3 (CTAF) 257.8

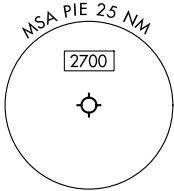
TOP ALTITUDE:  
1600

RNAV 1 - DME/DME/IRU or GPS required.  
RADAR required.



TAKEOFF MINIMUMS  
Rwy 18: Standard.  
Rwys 4, 36: Standard with minimum climb of 500'/NM to 520.  
Rwy 22: Standard with minimum climb of 230'/NM to 300.

NOTE: Jet aircraft only.  
NOTE: WILON Transition for use by aircraft filed to Jacksonville area airports only, or as assigned by ATC.



NOTE: Chart not to scale.

(CONTINUED ON FOLLOWING PAGE)

SE-3, 07 AUG 2025 to 04 SEP 2025

SE-3, 07 AUG 2025 to 04 SEP 2025