

APP CRS <b>039°</b>	Rwy Idg TDZE Apt Elev	<b>4498</b> <b>612</b> <b>612</b>
------------------------	-----------------------------	---

RNAV (GPS) RWY 4  
MUSKOGEE-DAVIS RGNL (MKO)

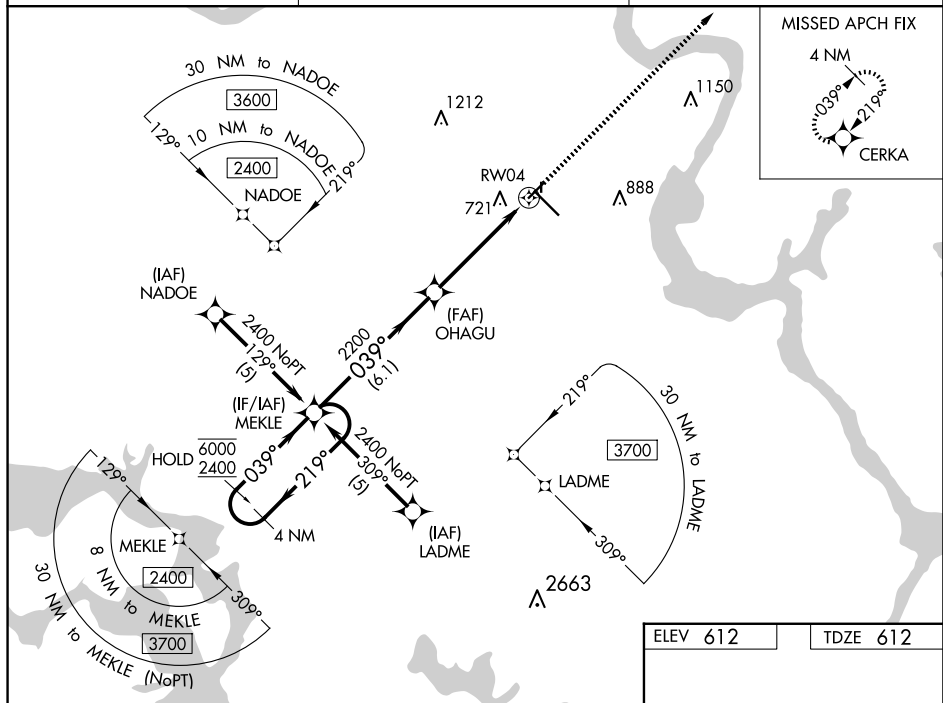
RNP APCH-GPS.

**T** Rwy 4 helicopter visibility reduction below  $\frac{3}{4}$  SM NA. For uncompensated Baro-VNAV systems, LNAV/VNAV NA below  $-16^{\circ}\text{C}$  or above  $54^{\circ}\text{C}$ . Straight-in Rwy 4 NA at night, Circling Rwy 4, 18, 22, 36 NA at night.

**MISSED APPROACH:** Climb to 2600 direct CERKA and hold.

ASOS  
135.025

FORT WORTH CENTER  
132.2 338.35

UNICOM  
122.8 (CTAF) **L**

4 NM Holding Pattern

MEKLE

OHAGU

2600 CERKA

6000 ← 219°

2400 039° →

039°

2200

1.3 NM to RW04

RW04


GP 3.00°

TCH 40

6.1 NM

3.5 NM

1.3

CATEGORY	A	B	C	D
LNNAV/ VNAV DA	1079-1 $\frac{3}{8}$ 467 (500-1 $\frac{3}{8}$ )			
LNNAV MDA	1080-1	468 (500-1)	1080-1 $\frac{3}{8}$	468 (500-1 $\frac{3}{8}$ )
 CIRCLING	1140-1 528 (600-1)	1180-1 568 (600-1)	1320-2 708 (800-2)	1400-2 $\frac{1}{2}$ 788 (800-2 $\frac{1}{2}$ )

[illegible]