

| | | |
|--|------------------------|---|
| WAAS CH 42807 W31B | APP CRS 309° | Rwy Idg 7202 TDZE 593 Apt Elev 612 |
|--|------------------------|---|

RNAV (GPS) RWY 31

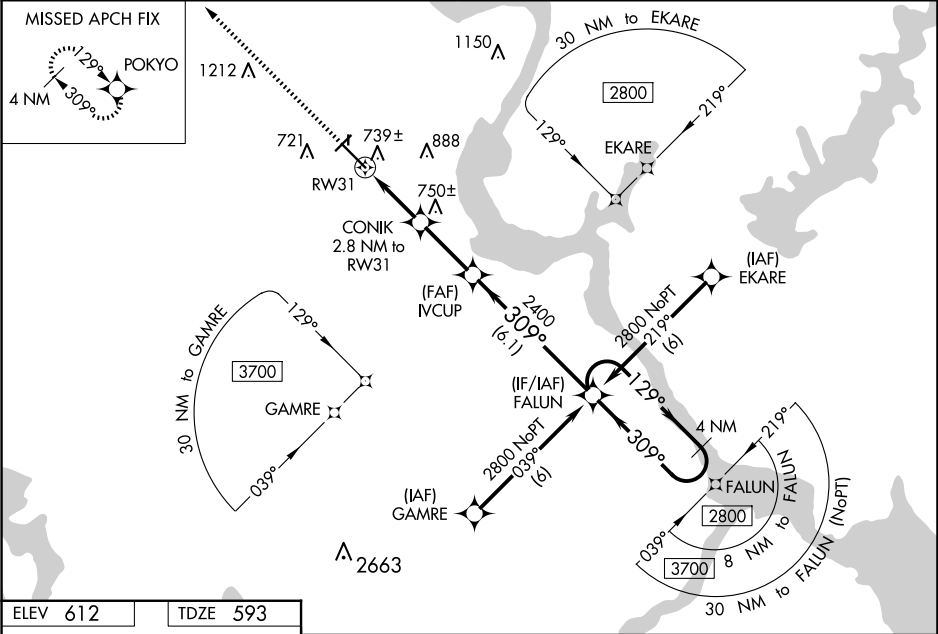
MUSKOGEE-DAVIS RGNL (MKO)

⚠ For uncompensated Baro-VNAV systems, procedure NA below -16°C (4°F) or above 47°C (116°F). Baro-VNAV and VDP NA when using Tahlequah altimeter setting. When local altimeter setting not received, use Tahlequah altimeter setting: increase LPV DA to 934, LNAV/VNAV DA to 1230, and visibility LPV and LNAV/VNAV all Cats ¼ SM; increase all MDA 100 feet and visibility LNAV Cat C/D/E and Circling Cat C ¼ SM, and Circling Cat D ½ SM. Inop table does not apply to LNAV/VNAV Cat A/B/C and LNAV Cat C. Circling Rwy 4, 18, 22, 36 NA at night. Rwy 4, 18, 22, 36 helicopter visibility reduction below 1 SM NA.

MAIS

MISSED APPROACH: Climb to 2900 direct POKYO and hold.

| | | |
|------------------------|--|---------------------------------|
| ASOS 135.025 | FORT WORTH CENTER 132.2 338.35 | UNICOM 122.8 (CTAF) 0 |
|------------------------|--|---------------------------------|



| | |
|-----------------|-----------------|
| ELEV 612 | TDZE 593 |
|-----------------|-----------------|

REIL Rwy 13 0

MIRL Rwy 13-31 0

2900 POKYO

*LNAV only.

CONIK 2.8 NM to RW31

*1.2 NM to RW31

RW31

IVCUP

FALUN

4 NM Holding Pattern

129°

309°

2800

2400

GP 3.00° TCH 53

1.2 1.6 NM 2.7 NM 6.1 NM

| CATEGORY | A | B | C | D | E |
|--------------|-----------------------|-----------------------|-----------------------|-------------------------|-------------------------|
| LPV DA | 843-1 | | 250 (300-1) | | |
| LNAV/VNAV DA | 1139-2 | | 546 (600-2) | | |
| LNAV MDA | 1000-¾ | 407 (400-¾) | 1000-1¼ | 407 (400-1¼) | 1000-1½ 407 (400-1½) |
| CIRCLING | 1140-1 528 (600-1) | 1180-1 568 (600-1) | 1320-2 708 (800-2) | 1400-2½ 788 (800-2½) | 1580-3 968 (1000-3) |