

WAAS CH <b>70607</b> <b>W13A</b>	APP CRS <b>129°</b>	Rwy Idg <b>7202</b> TDZE <b>607</b> Apt Elev <b>612</b>
--	------------------------	---

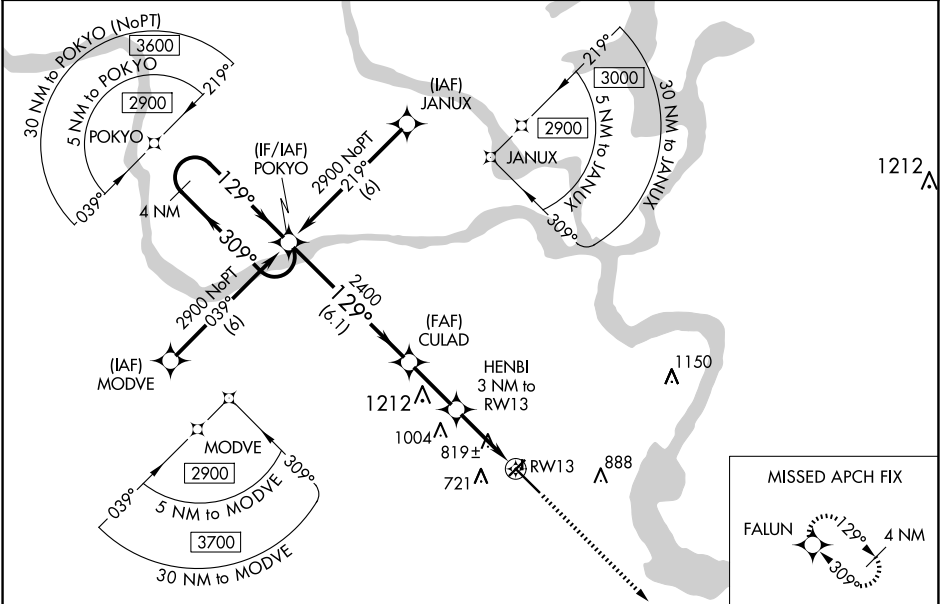
RNAV (GPS) RWY 13

MUSKOGEE-DAVIS RGNL (MKO)

⚠ For uncompensated Baro-VNAV systems, procedure NA below -16°C (4°F) or above 47°C (116°F).  
DME/DME RNP-0.3 NA. Baro-VNAV and VDP NA when using Tahlequah altimeter setting. When local  
altimeter setting not received, use Tahlequah altimeter setting: increase LPV DA to 948, LNAV/VNAV DA  
to 1233, and visibility LPV all Cats ½ SM and LNAV/VNAV all Cats ¼ SM; increase all MDA 100 feet  
and visibility LNAV Cat C/D/E and Circling Cat D ½ SM, and Circling Cat C ¼ SM. Circling Rwy 4,  
18, 22, 36 NA at night. Rwy 4, 18, 22, 36 helicopter visibility reduction below 1 SM NA.

MISSED APPROACH:  
Climb to 2800 direct  
FALUN and hold.

ASOS <b>135.025</b>	FORT WORTH CENTER <b>132.2 338.35</b>	UNICOM <b>122.8 (CTAF) 0</b>
------------------------	--	---------------------------------



ELEV 612		TDZE 607	
4 NM Holding Pattern		POKYO	
2900		CULAD	
GP 3.00° TCH 50		HENBI 3 NM to RW13	
6.1 NM		*1620	
CATEGORY		A	
LPV DA		857-¾ 250 (300-¾)	
LNAV/VNAV DA		1142-2 535 (600-2)	
LNAV MDA		1180-1 573 (600-1)	
CIRCLING		1180-1 568 (600-1)	
		1180-1½ 573 (600-1½)	
		1180-1¾ 573 (600-1¾)	
		1180-2 573 (600-2)	
		1320-2 708 (800-2)	
		1400-2½ 788 (800-2½)	
		1580-3 968 (1000-3)	
		REIL Rwy 13 0	
		MIRL Rwy 13-31 0	