

TYLER, TEXAS

AL-622 (FAA)

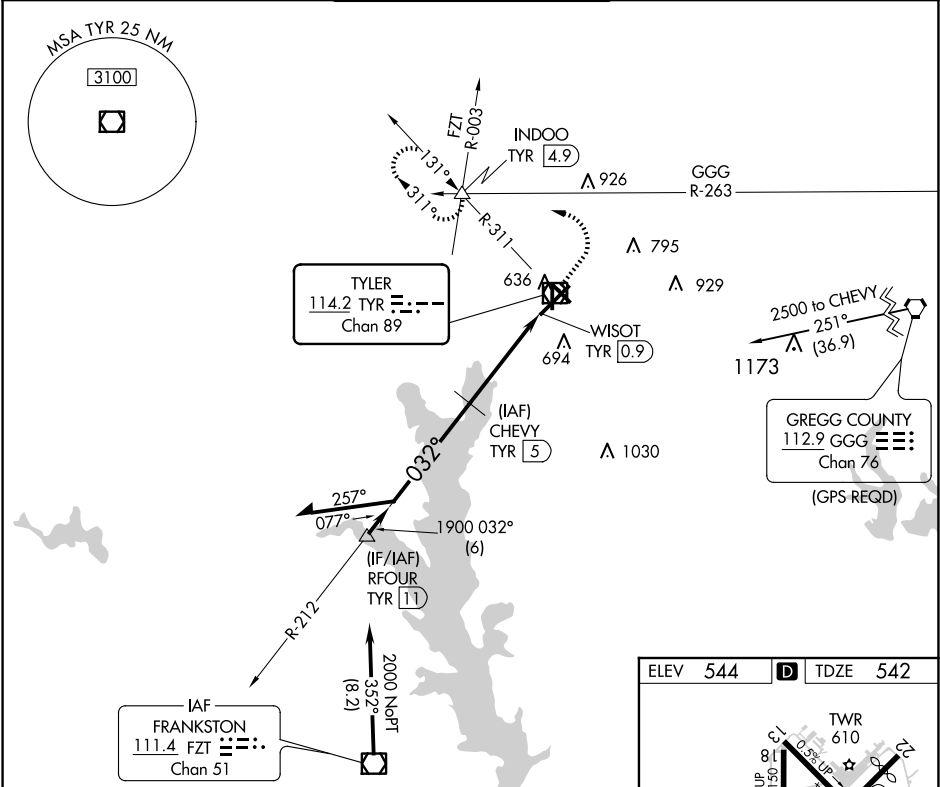
23278

VOR/DME TYR	APP CRS	Rwy Idg	7734
114.2	032°	TDZE	542
Chan 89		Apt Elev	544

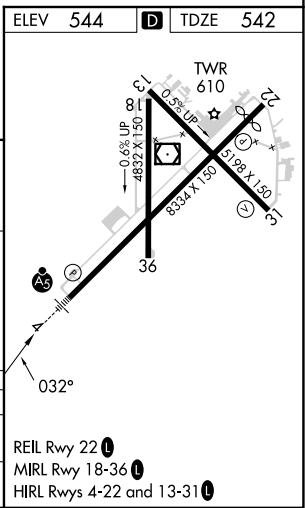
VOR RWY 4  
TYLER POUNDS RGNL (TYR)

DME required.	MALSR	MISSED APPROACH: Climb to 1000 then climbing left turn to 2200 on TYR VOR/DME R-311 to INDOO INT/TYR 4.9 DME and hold.
For inop ALS, increase Cat C/D visibility to 1 1/8 SM.	AS	

ATIS 126.25	LONGVIEW APP CON ★ 128.75 379.15	POUNDS TOWER ★ 120.1 (CTAF) 257.8	GND CON 121.9	UNICOM 122.95
----------------	-------------------------------------	--------------------------------------	------------------	------------------



	CHEVY TYR 5	1000	2200	INDOO
	2100		TYR R-311	
2000	212°	3.00°	TYR 2	WISOT TYR 0.9
	032°	TCH 55		
	1900			
		3 NM	1.1 NM	
CATEGORY	A	B	C	D
S-4	940-1/2 398 (400-1/2)		940-3/4 398 (400-3/4)	
CIRCLING	980-1 436 (500-1)	1020-1 476 (500-1)	1160-1 3/4 616 (700-1 3/4)	1280-2 1/4 736 (800-2 1/4)



TYLER, TEXAS  
Amdt 5C 20APR23

32°21'N-95°24'W

TYLER POUNDS RGNL (TYR)  
VOR RWY 4

SC-2, 07 AUG 2025 to 04 SEP 2025

SC-2, 07 AUG 2025 to 04 SEP 2025