

TYLER, TEXAS

AL-622 (FAA)

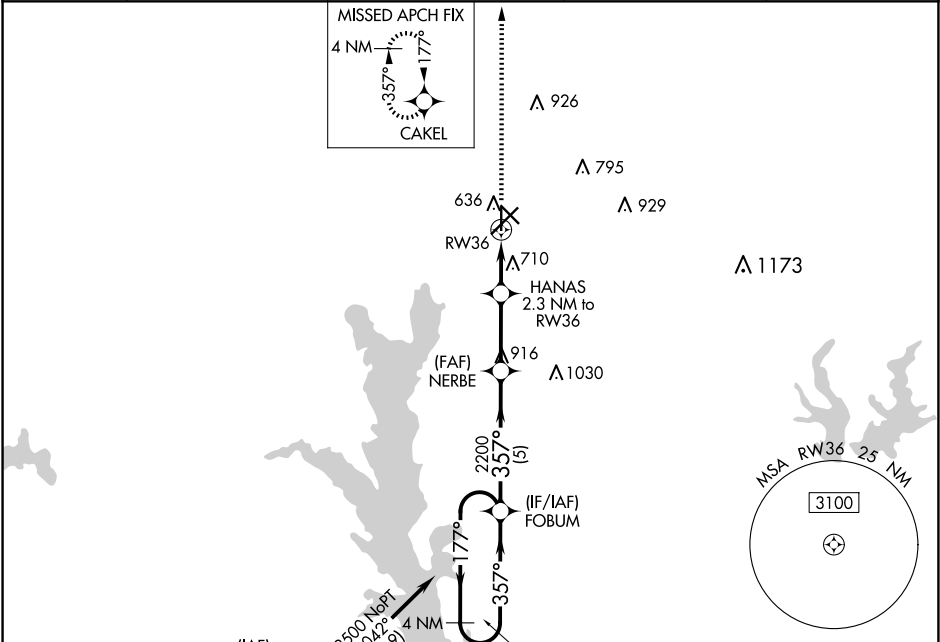
23278

WAAS CH <b>73037</b> <b>W36A</b>	APP CRS <b>357°</b>	Rwy Idg TDZE <b>544</b> Apt Elev <b>544</b>
--	------------------------	---

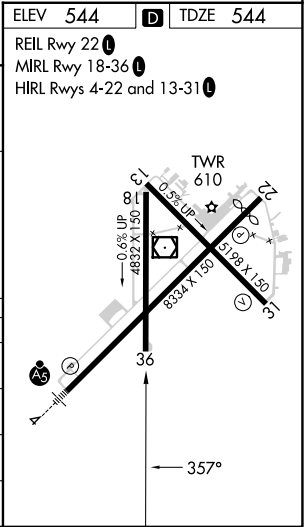
RNAV (GPS) RWY 36  
TYLER POUNDS RGNL (TYR)

RNP APCH.	MISSED APPROACH: Climb to 2500 direct CAKEL and hold.
-----------	---

ATIS <b>126.25</b>	LONGVIEW APP CON ★ <b>128.75 379.15</b>	POUNDS TOWER ★ <b>120.1 (CTAF) 0 257.8</b>	GND CON <b>121.9</b>	UNICOM <b>122.95</b>
-----------------------	--	---	-------------------------	-------------------------



4 NM Holding Pattern FOBUM					2500 CAKEL	
5000 ← 177° 2500 → 357°					* LNAV only.	
GP 3.00° TCH 45						
FOBUM						
NERBE						
HANAS						
2200						
2.3 NM to RW36						
* 1.2 NM to RW36						
RW36						
5 NM						
2.8 NM						
1.1 NM						
1.2 NM						
CATEGORY	A	B	C	D		
LPV DA	794-1		250 (300-1)			
LNAV/VNAV DA	799-1		255 (300-1)			
LNAV MDA	960-1	416 (500-1)	960-1 1/8	416 (500-1 1/8)		
CIRCLING	980-1 436 (500-1)	1020-1 476 (500-1)	1160-1 3/4 616 (700-1 3/4)	1280-2 1/4 736 (800-2 1/4)		



TYLER, TEXAS  
Amdt 1A 25FEB21

32°21'N-95°24'W

TYLER POUNDS RGNL (TYR)  
RNAV (GPS) RWY 36

SC-2, 07 AUG 2025 to 04 SEP 2025

SC-2, 07 AUG 2025 to 04 SEP 2025