

23278

WAAS CH 45514 W22A	APP CRS 222°	Rwy Idg 7734 TDZE 539 Apt Elev 544
--	------------------------	---

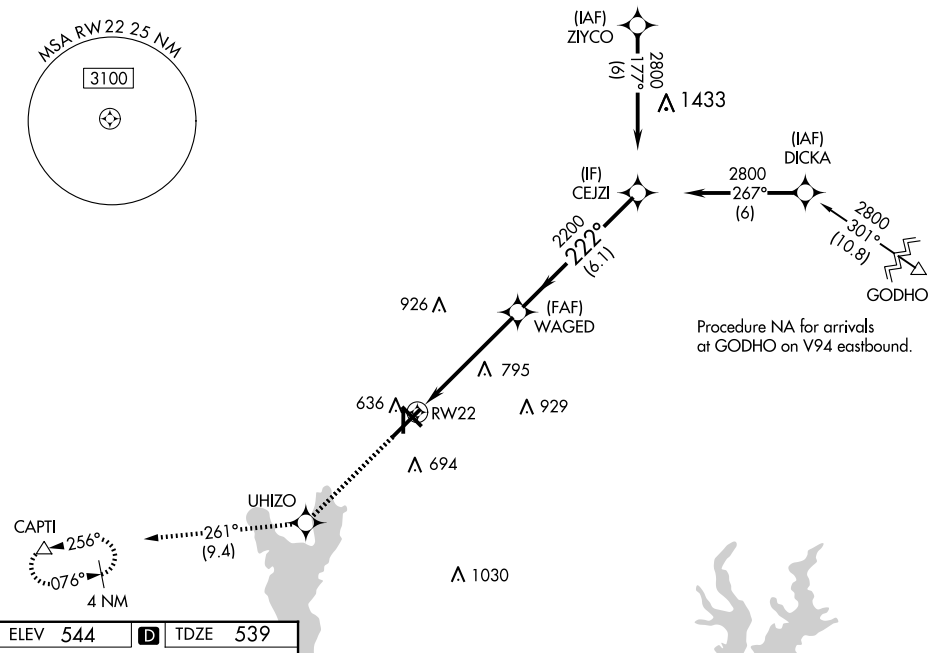
RNAV (GPS) RWY 22

RNP APCH.

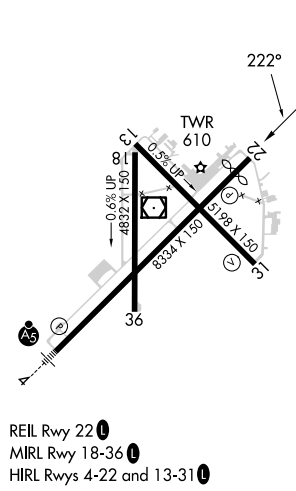
T For uncompensated Baro-VNAV systems, LNAV/VNAV NA
A below -5°C or above 54°C.

MISSED APPROACH: Climb to 2500 direct UHIZO and on track 261° to CAPTI and hold.

ATIS 126.25	LONGVIEW APP CON ★ 128.75 379.15	POUNDS TOWER★ 120.1(CTAF) 0 257.8	GND CON 121.9	UNICOM 122.95
-----------------------	--	---	-------------------------	-------------------------



ELEV 544	D	TDZE 539
----------	----------	----------



2500 ↑	UHZHO ✦	tr 261° △		
*LNAV only.				
CATEGORY	A	B	C	D
LPV DA	739-3 $\frac{3}{4}$		200 (200-3 $\frac{3}{4}$)	
LNAV/ VNAV DA	807-7 $\frac{7}{8}$		268 (300-7 $\frac{7}{8}$)	
LNAV MDA	1040-1 501 (500-1)		1040-1 $\frac{3}{8}$ 501 (500-1 $\frac{3}{8}$)	
C CIRCLING	1040-1 496 (500-1)		1160-1 $\frac{3}{4}$ 616 (700-1 $\frac{3}{4}$) 1280-2 $\frac{1}{4}$ 736 (800-2 $\frac{1}{4}$)	

TYLER POUNDS RGNL (TYR)

RNAV (GPS) RWY 22

SC-2, 07 AUG 2025 to 04 SEP 2025