

TYLER, TEXAS

AL-622 (FAA)

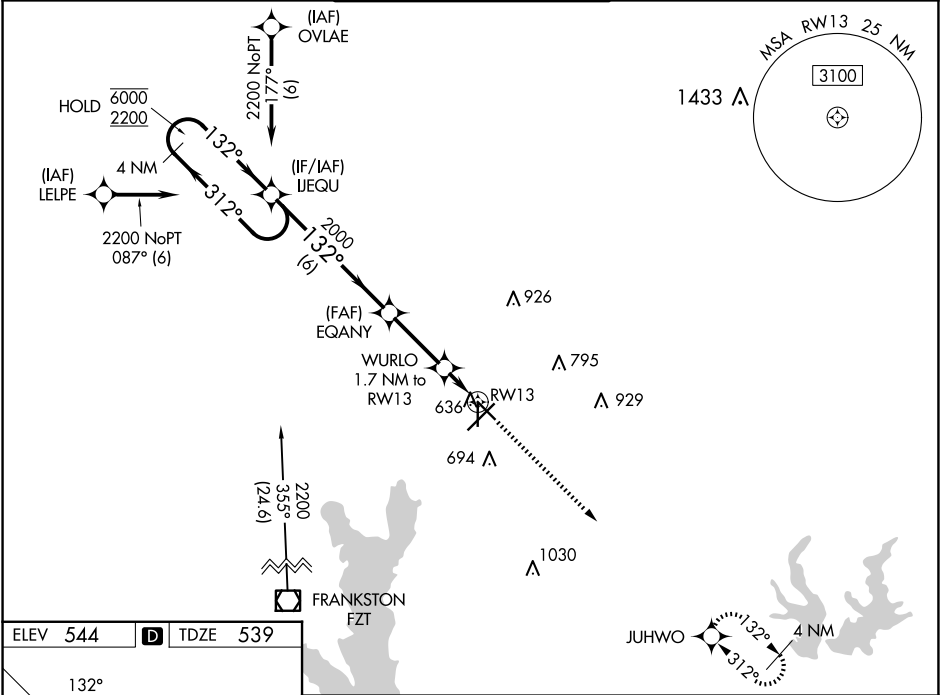
23278

WAAS CH <b>45701</b> <b>W13A</b>	APP CRS <b>132°</b>	Rwy Idg <b>5198</b> TDZE <b>539</b> Apt Elev <b>544</b>
--	------------------------	---

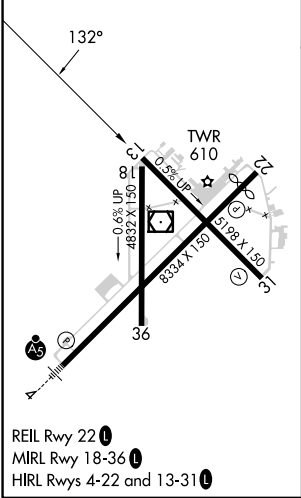
RNAV (GPS) RWY 13  
TYLER POUNDS RGNL (TYR)

RNP APCH.		MISSED APPROACH: Climb to 3000 direct JUHWO and hold.		
▼ ▲ For uncompensated Baro-VNAV systems, LNAV/VNAV NA below -5°C or above 54°C.				

ATIS <b>126.25</b>	LONGVIEW APP CON ★ <b>128.75 379.15</b>	POUNDS TOWER★ <b>120.1(CTAF) 257.8</b>	GND CON <b>121.9</b>	UNICOM <b>122.95</b>
-----------------------	--	---	-------------------------	-------------------------



ELEV <b>544</b>	<b>D</b>	TDZE <b>539</b>
-----------------	----------	-----------------



<div>4 NM Holding Pattern</div> <div>IJEQU</div> <div>EQANY</div> <div>WURLO 1.7 NM to RW13</div> <div>3000</div> <div>JUHWO</div> <div>GP 3.00° TCH 55</div> <div>*LNAV only.</div>				
<div>6000 ← 312°</div> <div>2200 → 132°</div> <div>132°</div> <div>2000</div> <div>*1 NM to RW13</div> <div>RW13</div> <div>6 NM</div> <div>2.8 NM</div> <div>0.7</div> <div>1 NM</div>				
CATEGORY	A	B	C	D
LPV DA	739-¾ 200 (200-¾)			
LNAV/VNAV DA	820-⅞ 281 (300-⅞)			
LNAV MDA	900-1 361 (400-1)			
CIRCLING	980-1 436 (500-1)	1020-1 476 (500-1)	1160-1¾ 616 (700-1¾)	1280-2¼ 736 (800-2¼)

TYLER, TEXAS  
Amdt 3A 08OCT20

32°21'N-95°24'W

TYLER POUNDS RGNL (TYR)  
RNAV (GPS) RWY 13

SC-2, 07 AUG 2025 to 04 SEP 2025

SC-2, 07 AUG 2025 to 04 SEP 2025