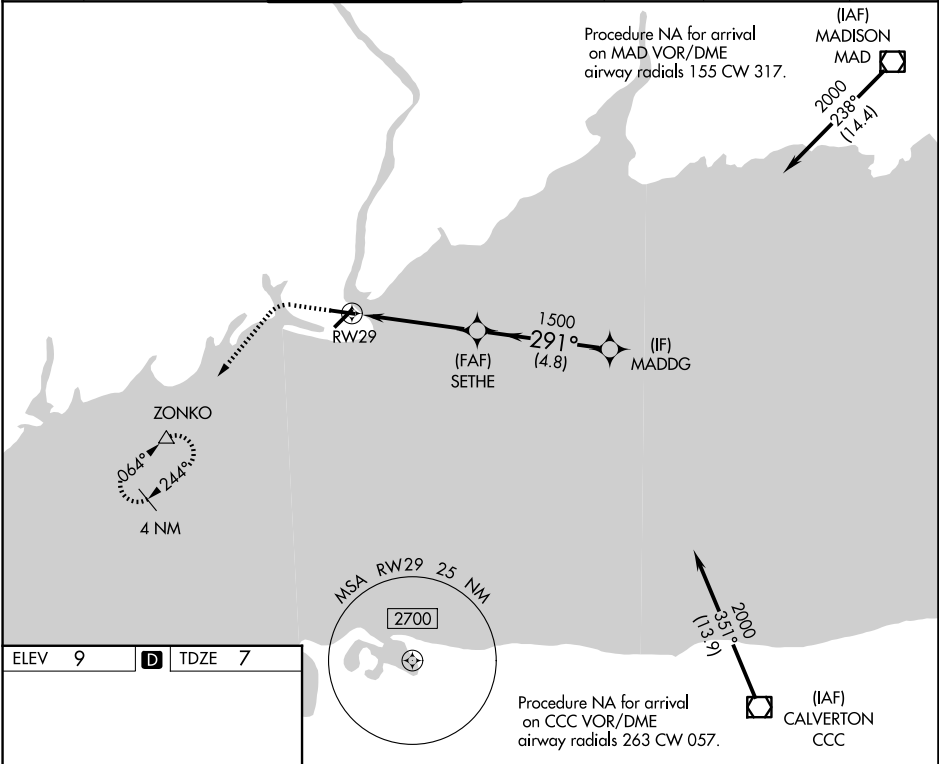


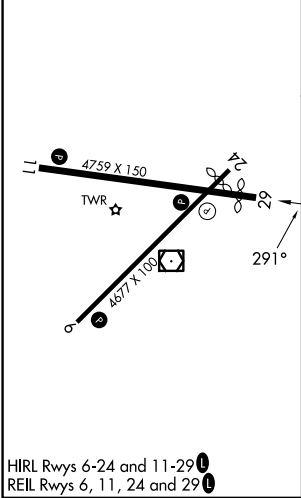
APP CRS <b>291°</b>	Rwy Ldg TDZE Apt Elev	<b>4395</b> <b>7</b> <b>9</b>
------------------------	-----------------------------	-------------------------------------

RNAV (GPS) RWY 29  
BRIDGEPORT/SIKORSKY (BDR)

RNP APCH - GPS. ▼ Rwy 29 helicopter visibility reduction below 1 SM NA. ▲ Circling Rwy 11, 29 NA at night. Rwy 29 Straight-in minimums NA at night.				MISSED APPROACH: Climb to 500 then climbing left turn to 2000 direct ZONKO and hold.		
ATIS <b>119.15</b>	NEW YORK APP CON <b>124.075 343.65</b>	BRIDGEPORT TOWER★ <b>120.9 0</b> (CTAF) <b>257.8</b>	GND CON <b>121.75 257.8</b>	CLNC DEL <b>121.75</b>	CLNC DEL <b>124.075</b> (When twr closed)	UNICOM <b>123.0</b>



ELEV 9	D	TDZE 7
--------	---	--------



Visual Segment - Obstacles.			
500	2000	ZONKO	△
MADDG			
2000			
SETHE			
1500			
RWY 29			
4.5 NM			
4.8 NM			
CATEGORY	A	B	C
LNAV MDA	380-1	373 (400-1)	
CIRCLING	480-1 471 (500-1)	620-1 611 (700-1)	820-2½ 811 (900-2½)