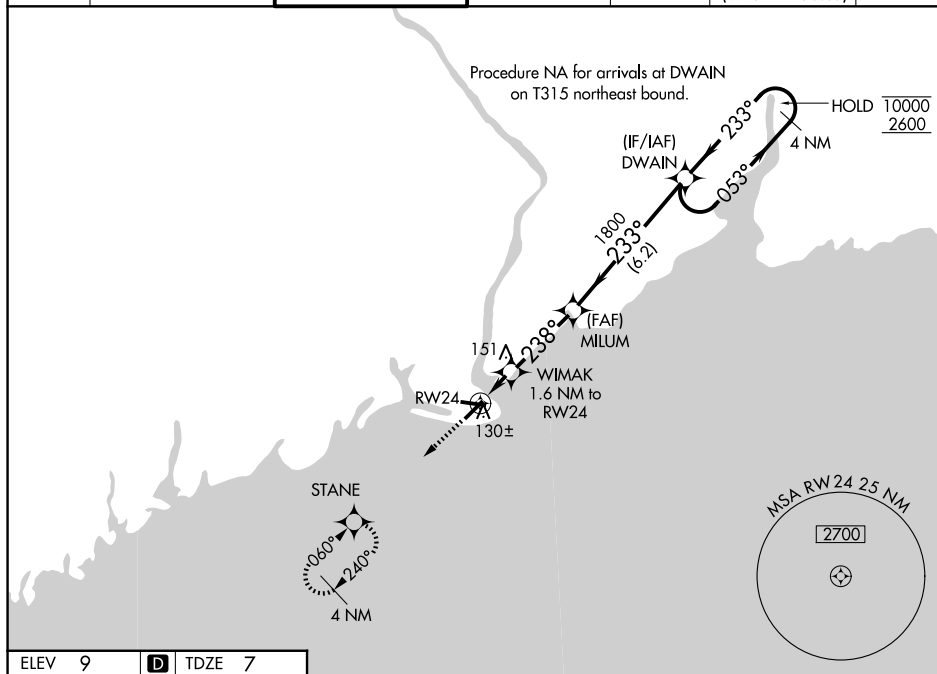


RNAV (GPS) RWY 24
BRIDGEPORT/SIKORSKY (BDR)

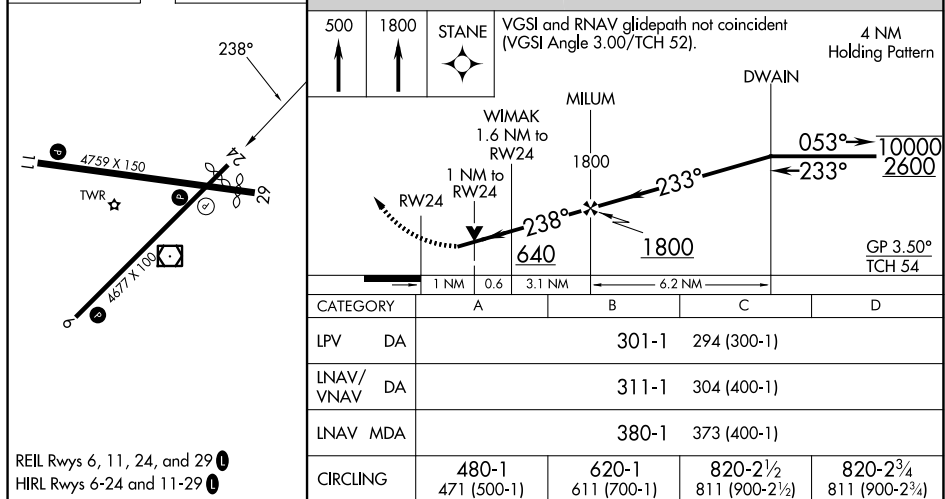
T Circling to Rwy 11, 29 NA at night. Rwy 24 helicopter visibility reduction below $\frac{3}{4}$ SM NA. For uncompensated Baro-VNAV systems, LNAV/VNAV NA below -14°C or above 47°C.

MISSED APPROACH: Climb to 500, then climb to 1800 direct STANE and hold, continue climb-in-hold 1800.

ATIS 119.15	NEW YORK APP CON 124.075 343.65	BRIDGEPORT TOWER★ 120.9 0 (CTAF) 257.8	GND CON 121.75 257.8	CLNC DEL 121.75	CLNC DEL 124.075 (When twr closed)	UNICOM 123.0
----------------	------------------------------------	---	-------------------------	--------------------	--	-----------------



ELEV 9	D	TDZE 7
--------	----------	--------



NE-1, 07 AUG 2025 to 04 SEP 2025