

LOC/DME I-BDR	APP CRS	Rwy Ldg
110.7	060°	4677
Chan 44		TDZE 7
		Apt Elev 9

ILS or LOC RWY 6

BRIDGEPORT/SIKORSKY (BDR)

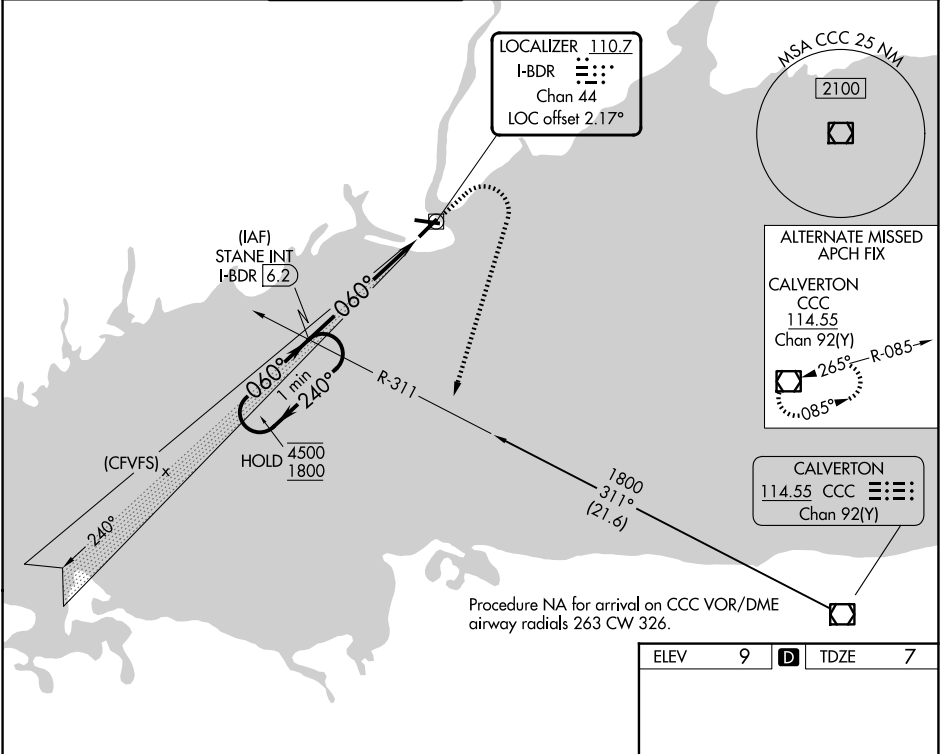
⚠

⚠

Circling to Rwy 11, 29 NA at night. Rwy 6 helicopter visibility reduction below ¼ SM NA. Autopilot coupled approach NA below 350.

MISSED APPROACH: Climb to 500 then climbing right turn to 1800 on heading 210° and CCC VOR/DME R-311 to STANE INT/I-BDR 6.2 DME and hold, continue climb-in-hold to 1800.

ATIS 119.15	NEW YORK APP CON 124.075 343.65	BRIDGEPORT TOWER★ 120.9 0 (CTAF) 257.8	GND CON 121.75 257.8	CLNC DEL 121.75	CLNC DEL 124.075 (When twr closed)	UNICOM 123.0
-----------------------	---	---	--------------------------------	---------------------------	---	------------------------



One Minute Holding Pattern

STANE INT I-BDR 6.2

500 1800 CCC R-311 STANE INT

4500 1800 240° 060° 1800

GS 3.00° TCH 51

4.5 NM 1 NM

CATEGORY	A	B	C	D
S-ILS 6		257-1	250 (300-1)	
S-LOC 6		380-1	373 (400-1)	
CIRCLING	480-1 471 (500-1)	620-1 611 (700-1)	820-2½ 811 (900-2½)	820-2¾ 811 (900-2¾)

ELEV	9	TDZE	7
------	---	------	---

REIL Rwy 6, 11, 24, and 29	
HIRL Rwy 6-24 and 11-29	
FAF to MAP 5.5 NM	
Knots	60 90 120 150 180
Min:Sec	5:30 3:40 2:45 2:12 1:50