

22363

LOC I-TOP <b><u>110.7</u></b>	APP CRS <b>309°</b>	Rwy Idg <b>5099</b> TDZE <b>880</b> Apt Elev <b>881</b>
----------------------------------	------------------------	---

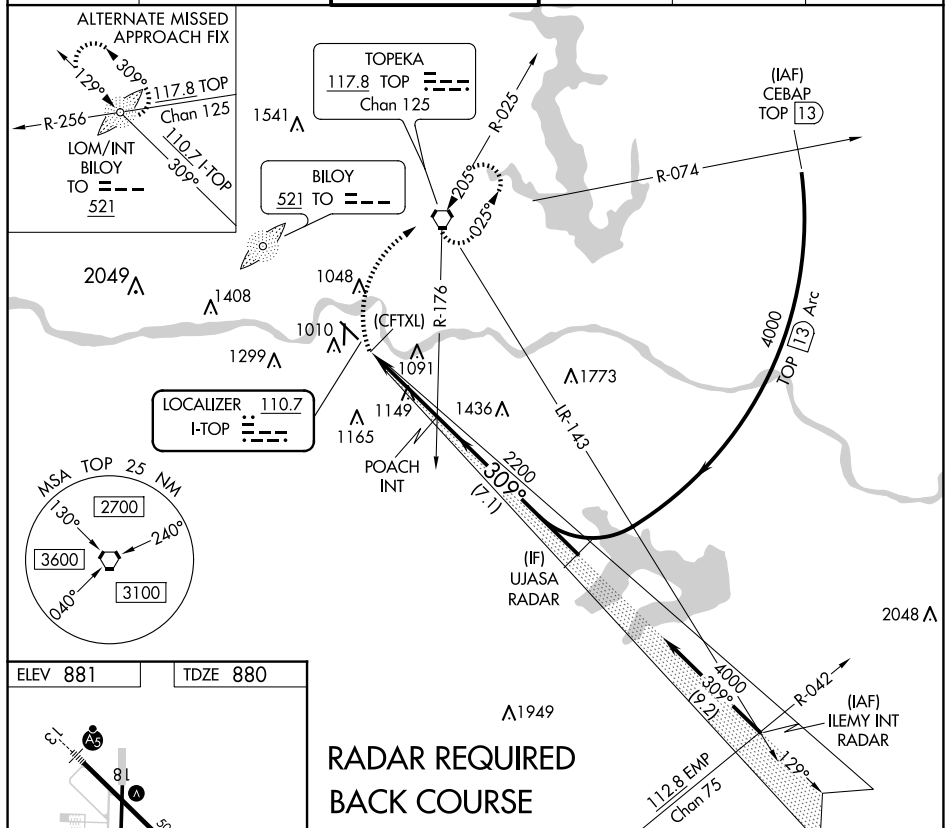
LOC BC RWY 31  
PHILIP BILLARD MUNI (TOP)



RADAR required.

**MISSED APPROACH:** Climbing right turn to 2800 direct TOP VORTAC and hold.

ASOS 121.275	KANSAS CITY CENTER 123.8 343.7	TOPEKA TOWER ★ 118.7 (CTAF) 0 257.8	GND CON 121.9	CLNC DEL 121.9	UNICOM 122.95
-----------------	-----------------------------------	--	------------------	-------------------	------------------



NC-2, 07 AUG 2025 to 04 SEP 2025

CATEGORY	A	B	C	D
S-31	1400-1	520 (600-1)	1400-1½ 520 (600-1½)	NA
<b>C</b> CIRCLING	1400-1 519 (600-1)	1440-1 559 (600-1)	1600-2 719 (800-2)	NA

TOPEKA, KANSAS  
Amdt 19C 29MAR18

39°04'N-95°37'W

PHILIP BILLARD MUNI (TOP)  
LOC BC RWY 31