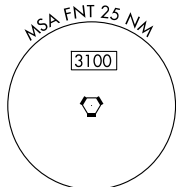


23222

VOR RWY 36
BISHOP INTL (FNT)

MISSED APPROACH: Climbing right turn to 3000 on FNT VORTAC R-097 to KATTY/10.3 DME and hold.

ATIS 133.15	GREAT LAKES APP CON ★ 118.8 257.9	FLINT TOWER ★ 126.3 (CTAF) 0 257.9	GND CON 121.9	CLNC DEL 121.75	UNICOM 122.95
----------------	--------------------------------------	---------------------------------------	------------------	--------------------	------------------



CAUTION: Brightly lighted parking lot 4000' east of approach end Rwy 27 can easily be confused for Rwy 27.

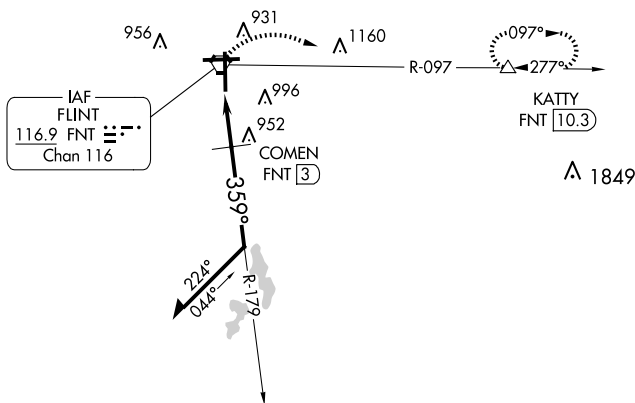
[illegible]

Diagram illustrating the FNT VORTAC station and its associated navigation aids. The station is located at an elevation of 3000 feet MSL. A bearing of 179° leads to a 2600-foot elevation, and a bearing of 359° leads to a 1500-foot elevation. A 3.06° angle is indicated between the 1500-foot elevation and the TCH 54. The distance from the station to the TCH 54 is 1.2 NM, and the distance from the station to the TCH 54 is 0.9 NM. The diagram also shows a 1.2 NM distance to the TCH 54 and a 0.9 NM distance to the TCH 54. The diagram is labeled with 'FNT VORTAC', 'FNT R-097', 'KATTY', 'COMEN FNT 3', and 'TCH 54'.

BISHOP INTL (FNT)
VOR RWY 36

EC-1, 07 AUG 2025 to 04 SEP 2025