

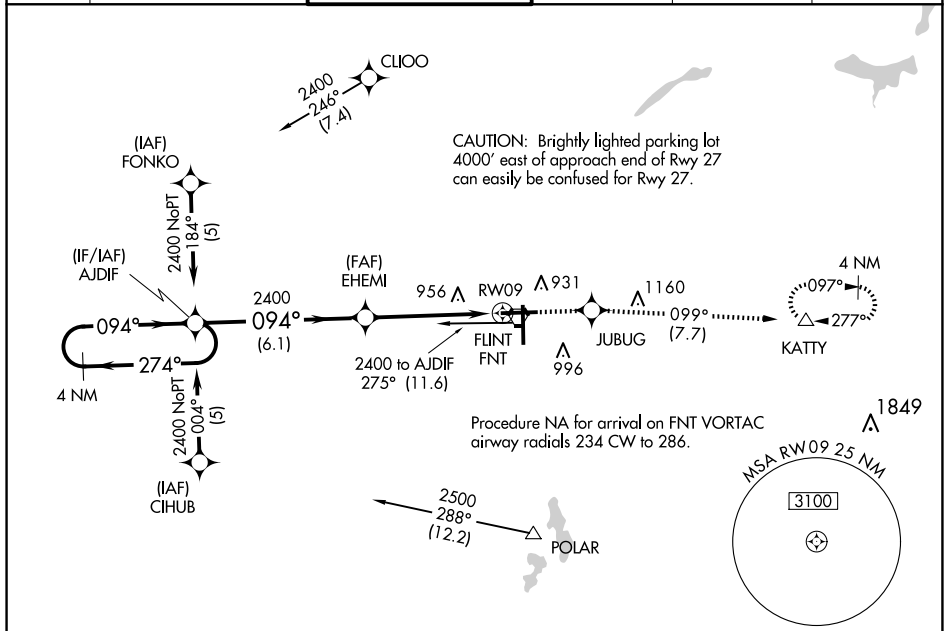
23222

RNAV (GPS) RWY 9
BISHOP INTL (FNT)

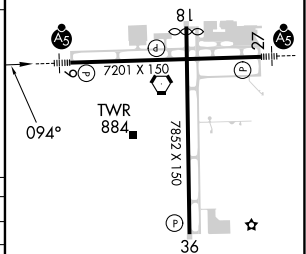
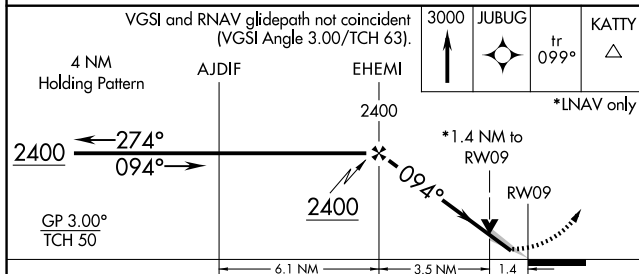
MALSR

MISSED APPROACH: Climb to 3000
direct JUBUG and on track 099° to
KATTY and hold.

ATIS 133.15	GREAT LAKES APP CON ★ 118.8 257.9	FLINT TOWER ★ 126.3 (CTAF) 0 257.9	GND CON 121.9	CLNC DEL 121.75	UNICOM 122.95
----------------	--------------------------------------	---------------------------------------	------------------	--------------------	------------------



ELEV 782	D	TDZE 771
----------	----------	----------



CATEGORY	A	B	C	D
LPV DA **	971/24		200 (200-½)	
LNNAV/ VNAV DA	1227/50		456 (500-1)	
LNNAV MDA	1260/24 489 (500-½)		1260/50 489 (500-1)	
C CIRCLING	1260-1 478 (500-1)	1300-1 518 (600-1)	1300-1½ 518 (600-1½)	1520-2¼ 738 (800-2¼)

HIRL Rwy 9-27 and 18-36 **L**
REIL Rwy 18 and 36 **L**

BISHOP INTL (FNT)
RNAV (GPS) RWY 9

EC-1, 07 AUG 2025 to 04 SEP 2025